



Driving Substantial Cash Flow With Limited Dilution

Fully funded, Multijurisdictional, Precious Metals Producer,
with Critical Mineral Upside

TSX-V: CERT | OTCQX: CRDOF

Corporate Presentation – June 2025



DISCLAIMERS

All figures in US\$ unless otherwise noted

This presentation contains "forward-looking statements" and "forward-looking information" (collectively, "forward-looking information") within the meaning of applicable Canadian securities legislation. All information contained in this news release, other than statements of current and historical fact, is forward-looking information. Often, but not always, forward-looking information can be identified by the use of words such as "plans", "expects", "budget", "guidance", "scheduled", "estimates", "forecasts", "strategy", "target", "intends", "objective", "goal", "understands", "anticipates" and "believes" (and variations of these or similar words) and statements that certain actions, events or results "may", "could", "would", "should", "might" "occur" or "be achieved" or "will be taken" (and variations of these or similar expressions). Forward-looking information is also identifiable in statements of currently occurring matters which may continue in the future, such as "providing the Company with", "is currently", "allows/allowing for", "will advance" or "continues to" or other statements that may be stated in the present tense with future implications. All of the forward-looking information in this presentation is qualified by this cautionary note.

Forward-looking information is based on, among other things, opinions, assumptions, estimates and analyses that, while considered reasonable by Cerrado Gold ("Cerrado") at the date the forward-looking information is provided, inherently are subject to significant risks, uncertainties, contingencies and other factors that may cause actual results and events to be materially different from those expressed or implied by the forward-looking information.

Forward-looking statements involve known and unknown risks, uncertainties, contingencies and other factors that may cause actual results and events to be materially different from those expressed or implied by the forward-looking information. The risks, uncertainties, contingencies and other factors that may cause actual results to differ materially from those expressed or implied by the forward-looking information may include, but are not limited to, relating to the execution and completion of the transactions described in this presentation, risks generally associated with the mining industry, such as economic factors (including future commodity prices, currency fluctuations, energy prices and general cost escalation), uncertainties related to the development and operation of Cerrado's and Ascendant Resource Inc.'s ("Ascendant") projects, dependence on key personnel and employee and union relations, risks related to political or social unrest or change, rights and title claims, operational risks and hazards, including unanticipated environmental, industrial and geological events and developments and the inability to insure against all risks, failure of plant, equipment, processes, transportation and other infrastructure to operate as anticipated, compliance with government and environmental regulations, including permitting requirements and anti-bribery legislation, volatile financial markets that may affect Cerrado's ability to obtain additional financing on acceptable terms, the failure to obtain required approvals or clearances from government authorities on a timely basis, uncertainties related to the geology, continuity, grade and estimates of mineral reserves and resources, and the potential for variations in grade and recovery rates, uncertain costs of reclamation activities, tax refunds, hedging transactions, as well as the risks discussed in Cerrado's most recent management's discussion and analysis filed with the Canadian provincial securities regulatory authorities and available on SEDAR+ at www.sedarplus.com. Should one or more risk, uncertainty, contingency or other factor materialize or should any factor or assumption prove incorrect, actual results could vary materially from those expressed or implied in the forward-looking information. Accordingly, the reader should not place undue reliance on forward-looking information. Cerrado does not assume any obligation to update or revise any forward-looking information after the date of this presentation or to explain any material difference between subsequent actual events and any forward-looking information, except as required by applicable law.

The scientific and technical information in this presentation has been reviewed and approved by Cid Bonfim, P. Geo., Senior Geologist Cerrado Gold and consultant to Ascendant Resources, and Pierre Jean LaFleur, P. Geo., VP Exploration for Voyager Metals, a 100% owned subsidiary of Cerrado Gold, each of whom are Qualified Persons as defined in National Instrument 43-101.

INVESTMENT HIGHLIGHTS

Steady State Gold Production

Precious Metals Production

- **Gold Production ~55Koz over next four years** based on recent PEA at MDN with exploration and expansion potential.
- Expect cash flow of ~\$50M/year and free cash flow of ~\$25M/year @ \$2100 Au¹
- Exploration: **New program of ~20,000 metres** derived; drilling to start in June 2025 targeting a **further potential 300-800Koz**

Developing Substantially Undervalued & Well-Advanced Assets

Near-Term Precious and Critical Minerals Production

- **Lagoa Salgada:** Defining the next low-cost VMS deposit with district scale discovery and exploration potential on Iberian Pyrite Belt – **Construction Decision 2025**

Longer Term Critical Mineral Optionality

- **Mont Sorcier:** Feasibility study underway to support annual production of 5Mtpa 67% iron concentrate² **suitable for the direct reduction iron and the green steel transition** located in Quebec, Canada – **BFS Q1 2026**. (PEA 2022 - Post Tax NPV: 1.6B)

Well-Funded

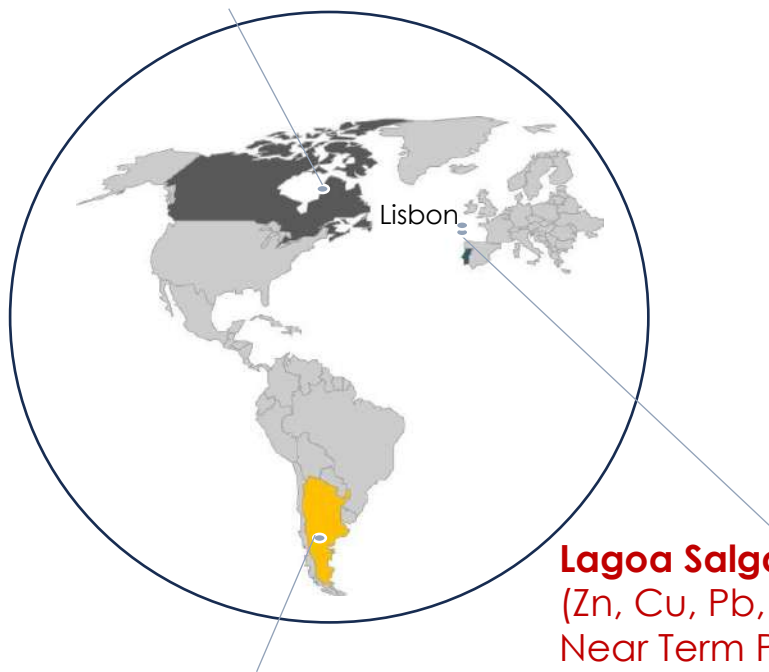
- **\$20M cash balance**, as of March 31, 2025, supplemented by **cash flow** from production and **additional asset sale proceeds of \$15M guaranteed and \$10M option**
- **Leveraging existing Cashflow and Project Financing** to drive development of well-advanced mines
- **Well funded to construction decision** to **minimize dilution** and **maximize value** for shareholders

INVESTMENT HIGHLIGHTS

Fully funded, Diversified Commodity and Multijurisdictional Producer

Diverse Geographical Portfolio

Mont Sorcier “MS” (Fe)
Longer Term Optionality
Quebec, Canada

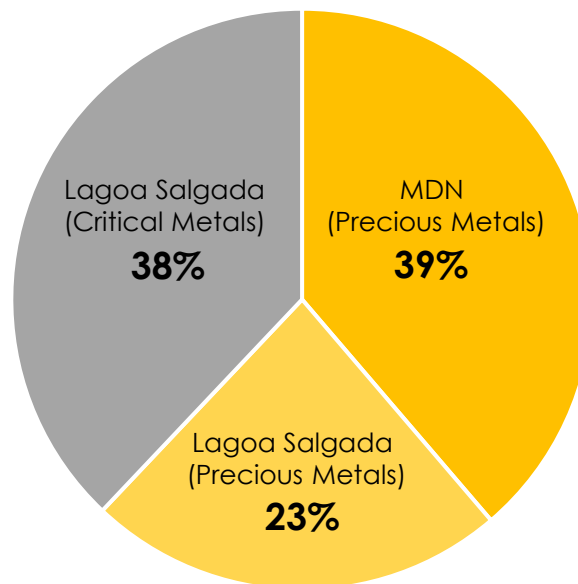


Minera Don Nicolas “MDN”
(Au, Ag) - Current Production
Santa Cruz, Argentina

Lagoa Salgada “LS”
(Zn, Cu, Pb, Sn, Ag, Au)
Near Term Production
Portugal

Precious Metals Focus

Lagoa Salgada & MDN LoM Commodity Exposure¹



Precious Metals

81% at Spot Prices²

62% using FS Prices¹

Value Proposition

Proforma Market Cap:
C\$89.5M

CASH: US\$20M
(Q1-2025)

Argentina: Free Cash Flow
US\$25M @ \$2,100 Au

Portugal: NPV US\$146M
(Production Mid-2027)

Quebec: NPV US\$1.6BN
(Longer Term Optionality)

Share Price: C\$0.67
Proforma Shares Outstanding
133.6M

1. LOM Commodity Exposure based on NI 43-101 Technical Reports Published: Minera Don Nicolas (Sep 19, 2024); Lagoa Salgada (Jul 25, 2023)
2. Spot Prices: Zn \$1.18, Pb \$0.88, Cu \$4.33, Sn 14.41, Ag 33.06, Au \$3332.81
3. Proforma NPV Based on NI 43-101 Technical Reports Published: Minera Don Nicolas (Sep 19, 2024); Lagoa Salgada (Jul 25, 2023); (Mont Sorcier (Jul 2, 2022)

INVESTMENT HIGHLIGHTS

Exceptional NAV Growth - Proforma NAV (US\$M – 100% Basis) ¹

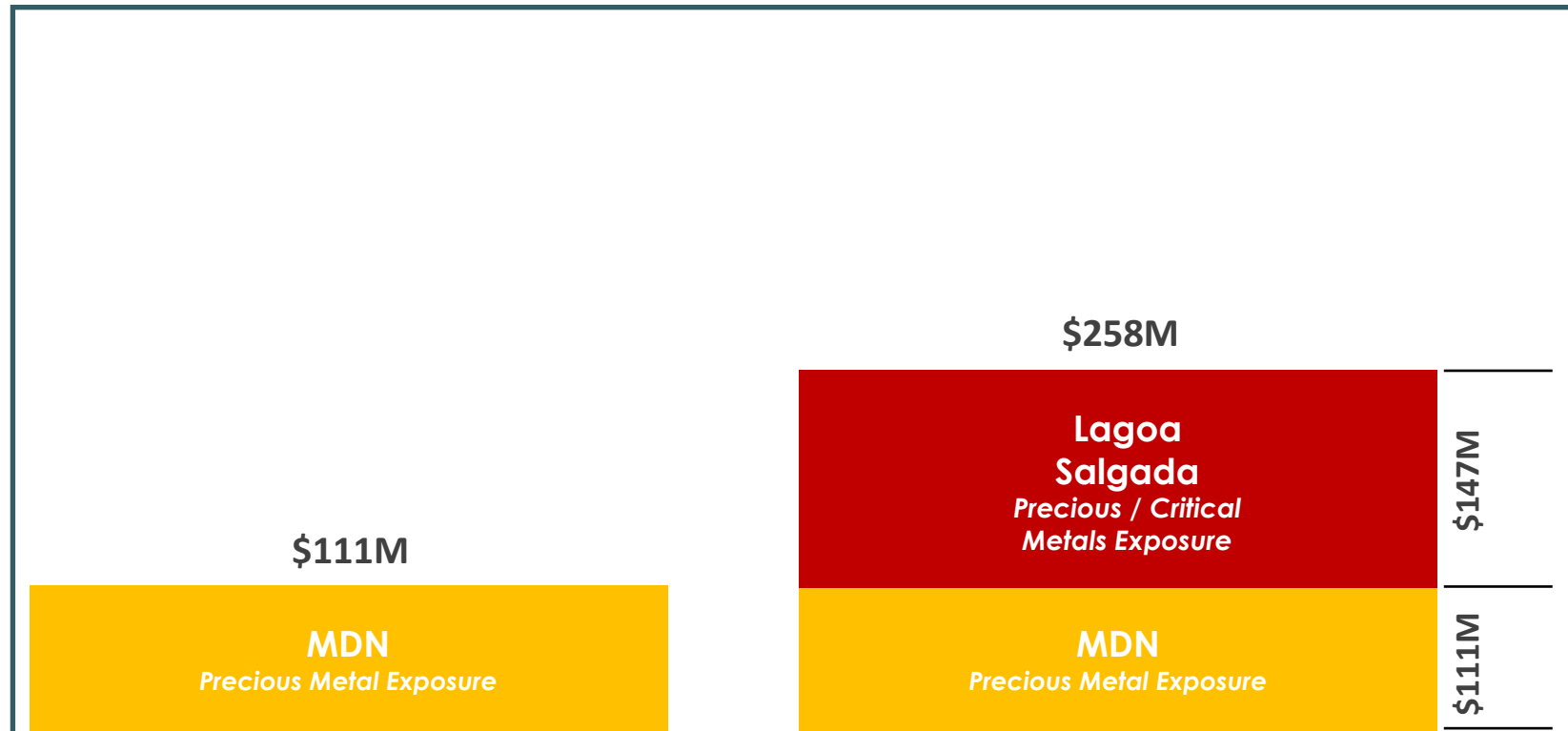
Production (Au Equivalent)

Current
55,000 oz

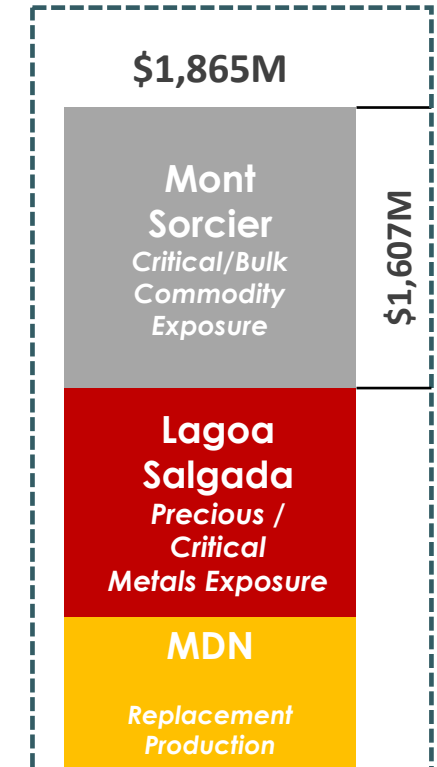
2027
97,000 oz

2030
328,000 oz

Current and Near-Term Precious and Critical Minerals Production



Longer Term Critical Minerals Optionality



1. Proforma NPV Based on NI 43-101 Technical Reports Published: Minera Don Nicolas (Sep 19, 2024); Lagoa Salgada (Jul 25, 2023); (Mont Sorcier (Jul 2, 2022)

INVESTMENT HIGHLIGHTS

Driving Substantial Cash Flow with Limited Dilution

Production (Au Equivalent)

Current
55,000 oz

2027
97,000 oz

2030
328,000 oz

Current and Near-Term EBITDA

Longer Term EBITDA
Optionality

EBITDA^{1,2}

\$44M/annum

MDN

Precious Metal Exposure

Current

\$112M/annum

Lagoa
Salgada

Precious and Critical
Metals Exposure

MDN

Precious Metal Exposure

2027

\$488M/annum

Mont
Sorcier

Critical/Bulk
Commodity
Exposure

2030:\$366M
@PEA Prices

Lagoa
Salgada

Precious and
Critical
Metals Exposure

2027: \$73M
2030: \$95M
@ BFS Prices
Zn: US\$1.20/lb

MDN

Replacement
Production

2025:\$44M
2027:\$39M
2030:\$39M (assumed)
@ Au \$2,100

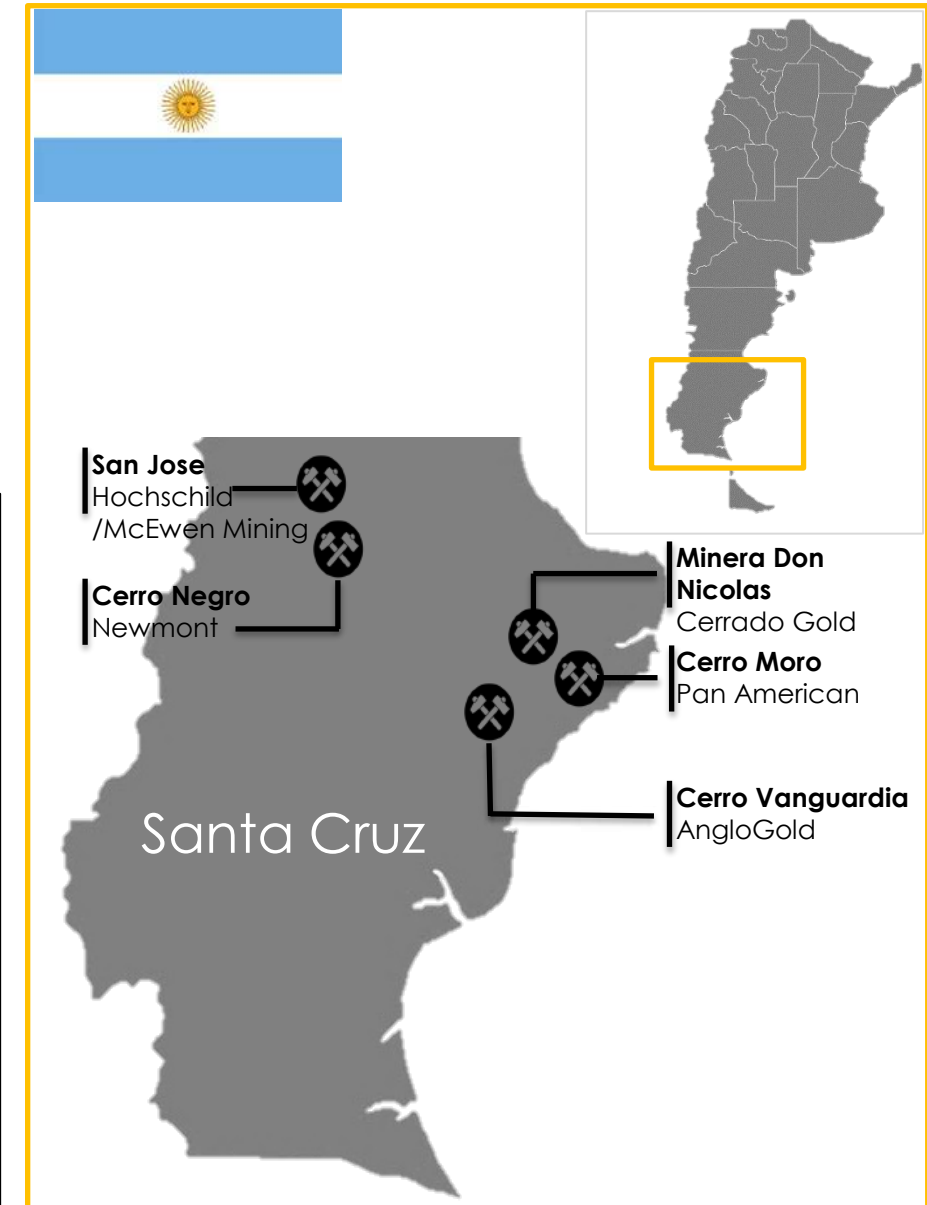
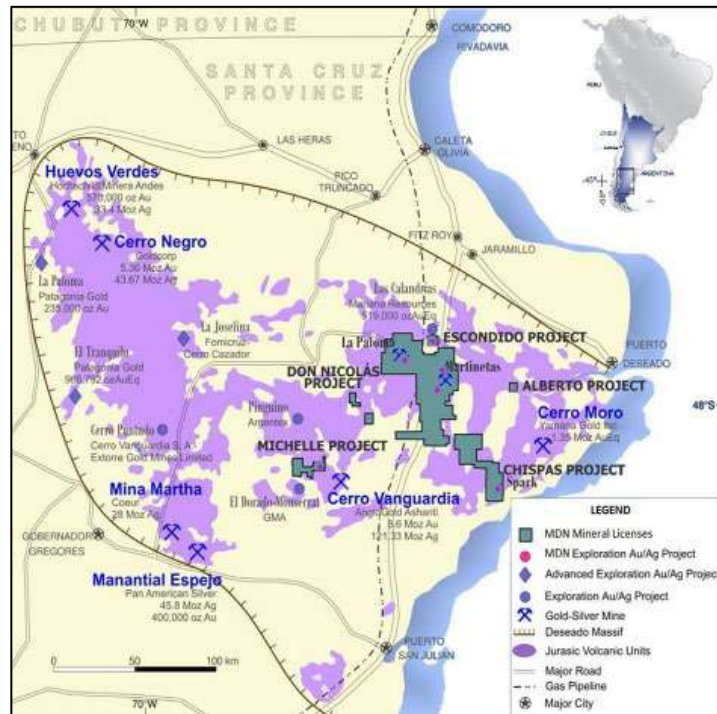
2030+

1. Proforma NPV Based on NI 43-101 Technical Reports Published: Minera Don Nicolas (Sep 19, 2024); Lagoa Salgada (Jul 25, 2023); (Mont Sorcier (Jul 2, 2022)
2. LOM Commodity Exposure based on NI 43-101 Technical Reports Published: Minera Don Nicolas (Sep 19, 2024); Lagoa Salgada (Jul 25, 2023)

MINERA DON NICOLAS

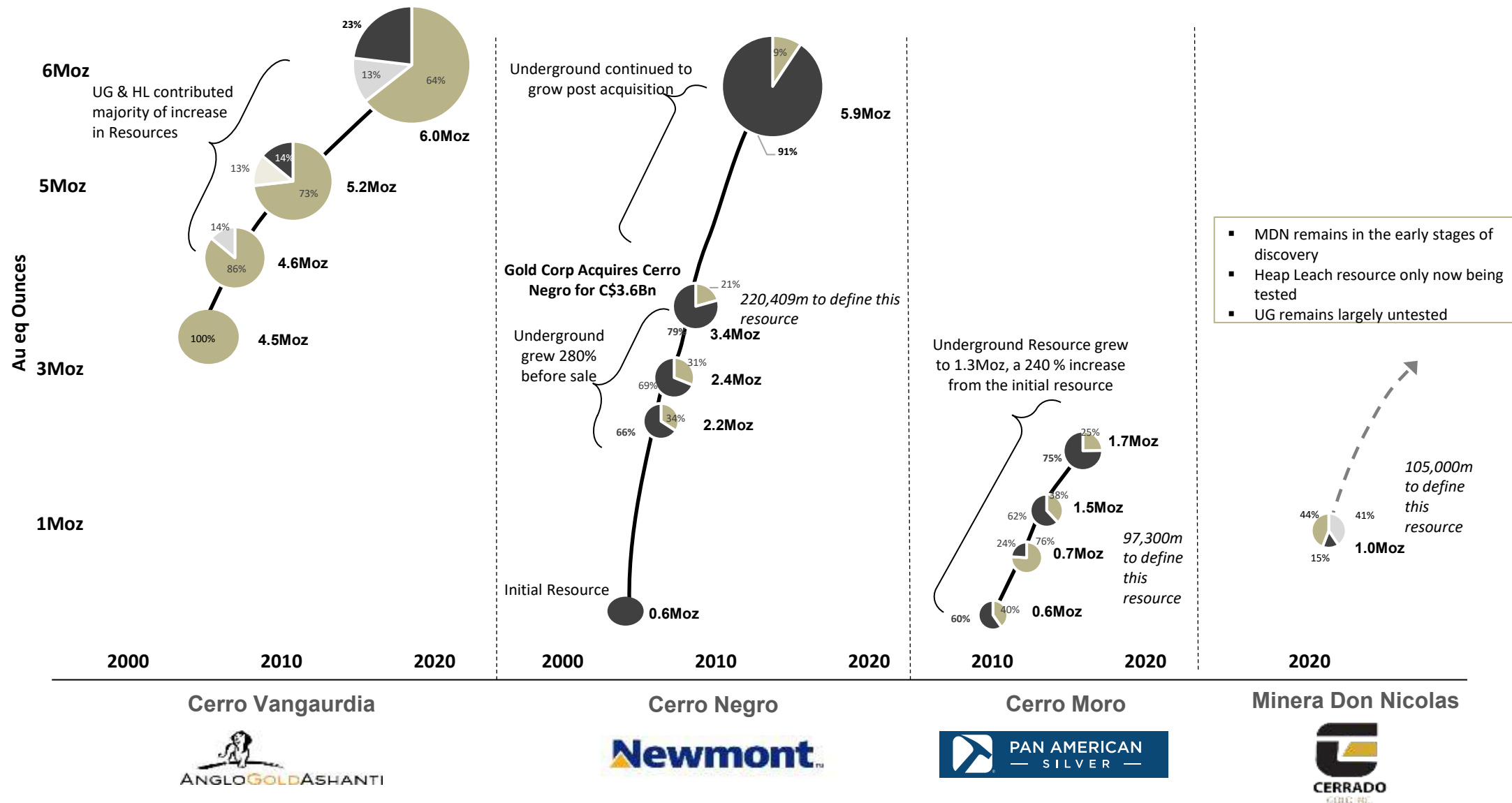
Extensive and Underexplored Land Package

- Largest land package in the prolific Deseado Masiff (330K hectares)
- Steady state production of ~55koz Au equiv. per year through to 2028
- Mineral Resources M&I: 490Koz, Inferred: 121Koz
- Exploration to date has only focused on near mine targets
- Underground potential development commencing in Q2 2025



MINERA DON NICOLAS

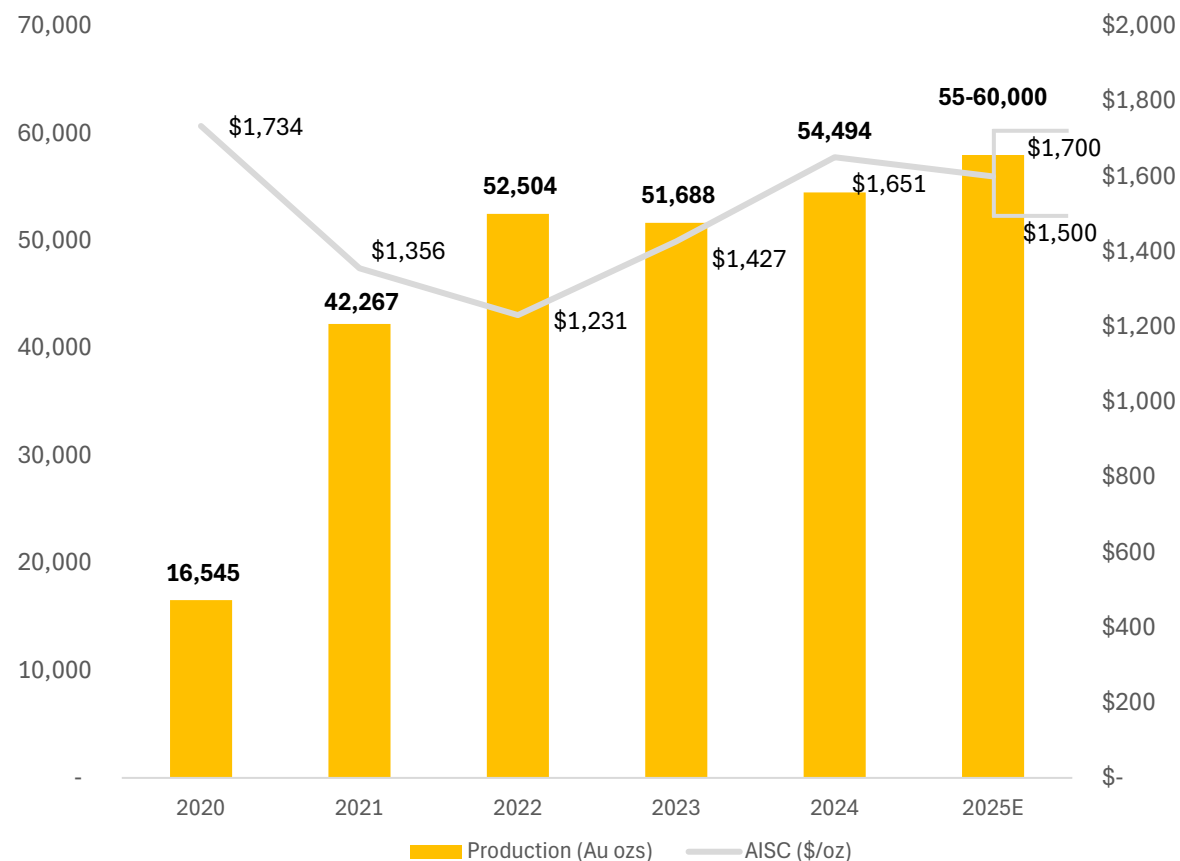
Well-Trodden Path to Production Growth and Resource Expansion



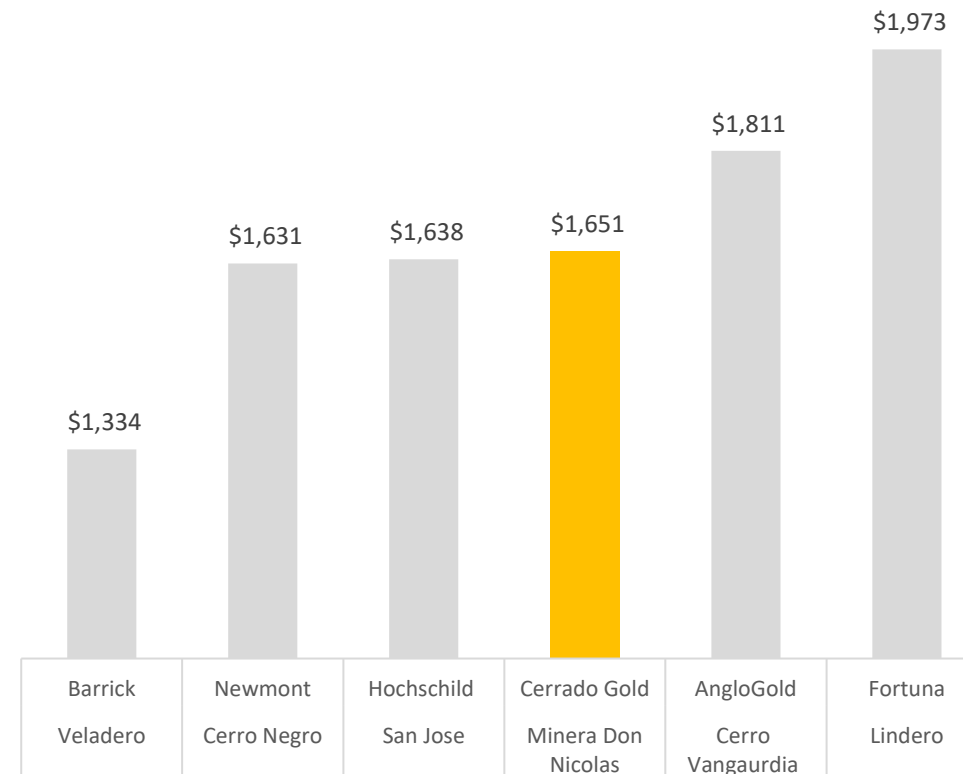
MINERA DON NICOLAS

Track Record of Operational Improvement and Competitive Costs

Operating History Post Acquisition Increased Production & Lower Costs



Competitive Producer in Argentina Amongst Peers AISC 2024



Source: Company's annual financial and MDA filings

MINERA DON NICOLAS – Current Production

Argentina



Highlights

- **Gold Production of ~55Koz** until 2028 based on recent PEA with **AISC guided between US\$1,300-\$1,500**
- Life of Mine **average annual EBITDA of US\$107M** and **FCF of US\$61M** at \$3,300 Gold
- **Heap leach development completed** with extensive exploration underway
- **Strong cash flows targeted** to continue debt reduction and fund exploration
- Lowest Cost producer in Santa Cruz, Argentina

Expansion Opportunities

- Exploration to date has focused on near mine open pit targets, but remains largely unexplored
- Paloma underground target offers significant exploration upside and production growth potential
- Largest land package in the prolific Deseado Massif (330K hectares)

| PEA | Base Case ¹ | Spot ⁴ |
|--|------------------------|-------------------|
| Average Annual Gold Equivalent Production (ounces) | 55,869 | 55,263 |
| Mine life (years) - Mine Plan start Date 1 April 2024 | 5.0 | 5.0 |
| NPV @ 5% discount rate (millions, after-tax) | \$ 111 | 273 |
| Gold Price (US\$/oz) | 2,100.0 | 3,300.0 |
| Average Annual EBITDA | \$ 49.2 M | \$106.6 M |
| Average Annual FCF | \$ 25.2 M | \$61.1 M |
| Operating Costs | | |
| all cash cost (per ounce sold) ² | 864 | 814 |
| on-site all-in-sustaining cost (per ounce sold) ³ | 1,146 | 1,146 |

1. Sprott Streaming Agreement has been excluded from this analysis

2. Before royalties and after by-product credits

3. Include C1 cash costs, plus royalties plus sustaining capital

4. Spot Price Au \$3116.70, Ag \$33.65

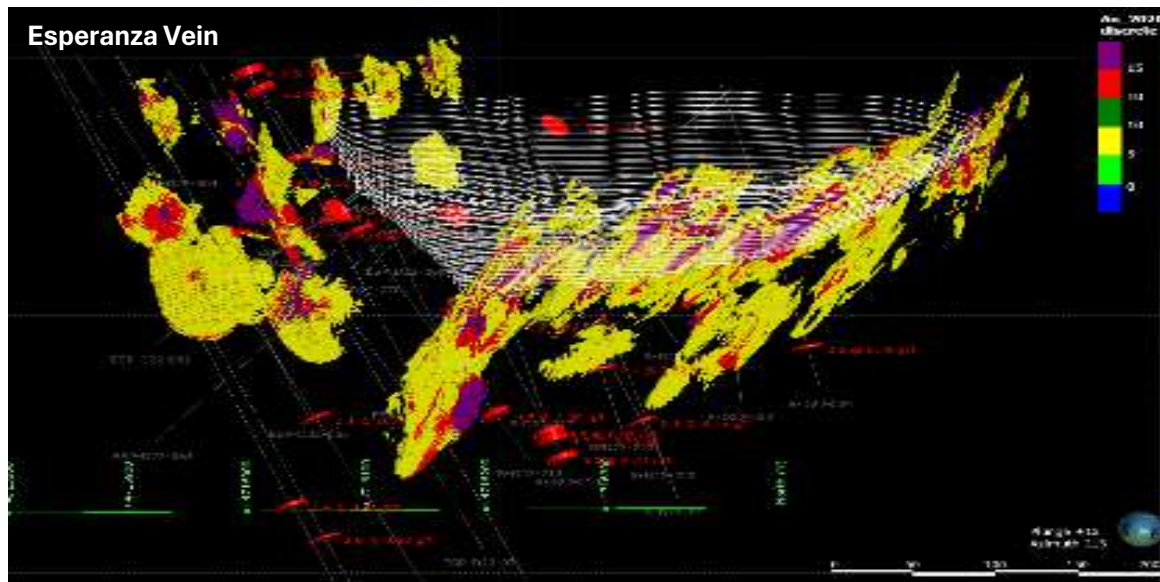
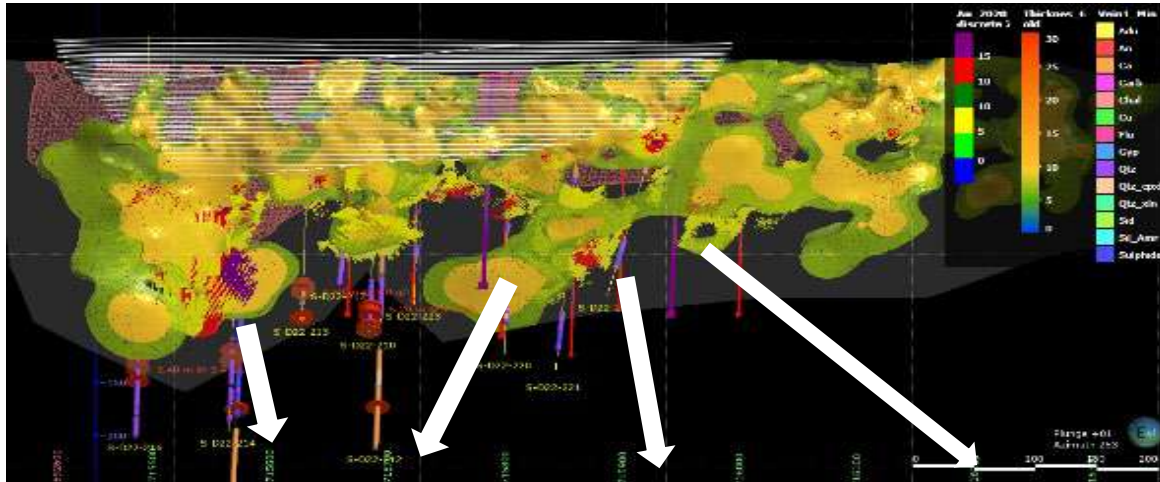
| NI 43-101 | | Grade Values | | Metal Content | |
|-----------|--------------|--------------|----------|---------------|-----------|
| Resources | Tonnage (kt) | Au (g/t) | Ag (g/t) | Au (k oz) | Ag (k oz) |
| M&I | 13.4 | 1.13 | 15.26 | 490 | 6,593 |
| Inferred | 3.6 | 1.05 | 3.20 | 121 | 370 |

Please see appendix for full resource table and notes

MINERA DON NICOLAS

Underground Growth Opportunity

Preliminary Testing of UG potential at Paloma pit



- Drilling to date only to a vertical depth of 200 metres directly under the high-grade Paloma Pit
- Existing Pit provides direct access to the Underground for rapid development
- Previous operators did not explore for underground targets
- Permit for received for underground operation

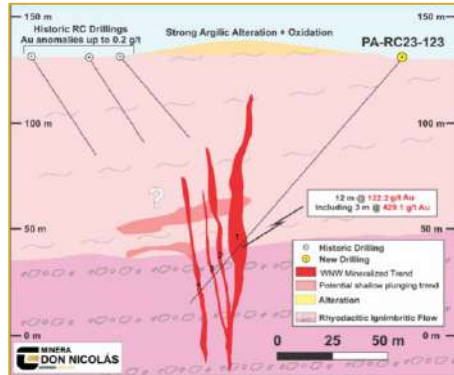


MINERA DON NICOLAS EXPLORATION

Numerous Open Pit & Underground Opportunities

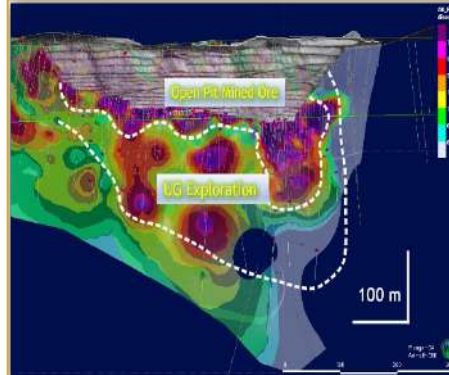
Paula Andrea

- High exploration potential, for deeper-seated, large high-grade deposits
- Two main targets/ high grade ore bodies have been discovered in this area, Baritina and Chulengo



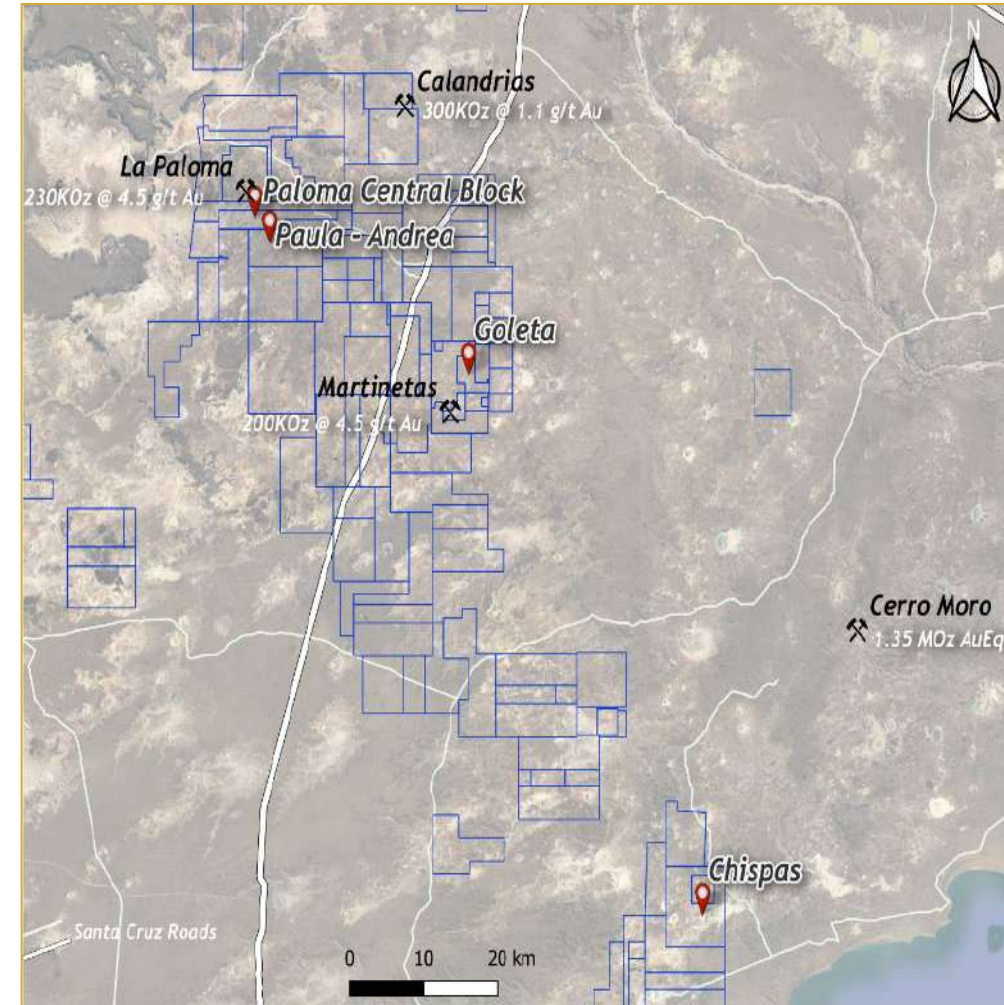
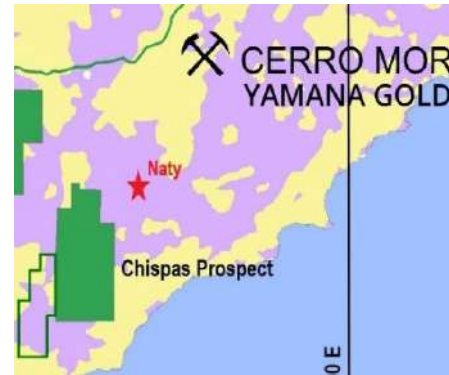
Paloma Central

- 50 km from the plant
- Known shoots that remain open under the Open Pit



Chispas

- On Strike to Cerro Morro's high-grade Naty zone
- 3 km of strike to be drilled



LAGOA SALGADA VMS PROJECT

Near Term Production & Cash Flow

Rationale for Transaction:

- **Buy 80% of Lagoa Salgada VMS Project** with a Post-tax NPV8% of US\$147 million and a 39% IRR in current Feasibility Study^{1,3}
 - Adds substantial precious and critical metals exposure at spot prices²
 - 42 % Gold & Silver,
 - 24% zinc
 - 14% copper
 - 5% tin)
 - Expected lowest cost quartile producer
 - US\$0.59/ lb ZnEq for first 5 years
 - US\$0.79/ lb ZnEq for LOM¹
 - EIA approval expected in Q2 , optimized feasibility in Q3, construction decision in Q4 2025: production H2 2027
 - Limited equity dilution anticipated to bring project to production
- **Fully funded to construction decision**, \$5MM budgeted to deliver optimized feasibility study
- **Construction funding well supported** with low-cost UK Export Credit Agency (UKEF) project financing with Banco Santander, ongoing support from Sprott, and potential off-takers



1. Based on Feasibility Study NI 43-101 Technical Reports Published for Lagoa Salgada on July 25, 2023

2. Spot Prices: Zn \$1.18, Pb \$0.88, Cu \$4.33, Sn 14.41, Ag 33.06, Au \$3332.81.

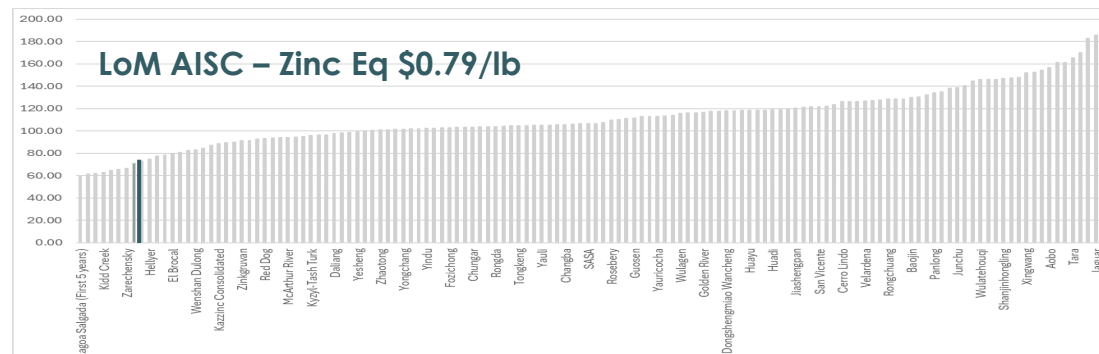
3. Metal Prices used in FS NI 43-101: \$1.20/lb (Zn), \$1.13/lb (Pb), \$3.50/lb (Cu), \$12.00/lb (Sn), \$1,700/oz (Au), \$22.00/oz (Ag)

LAGOA SALGADA VMS PROJECT

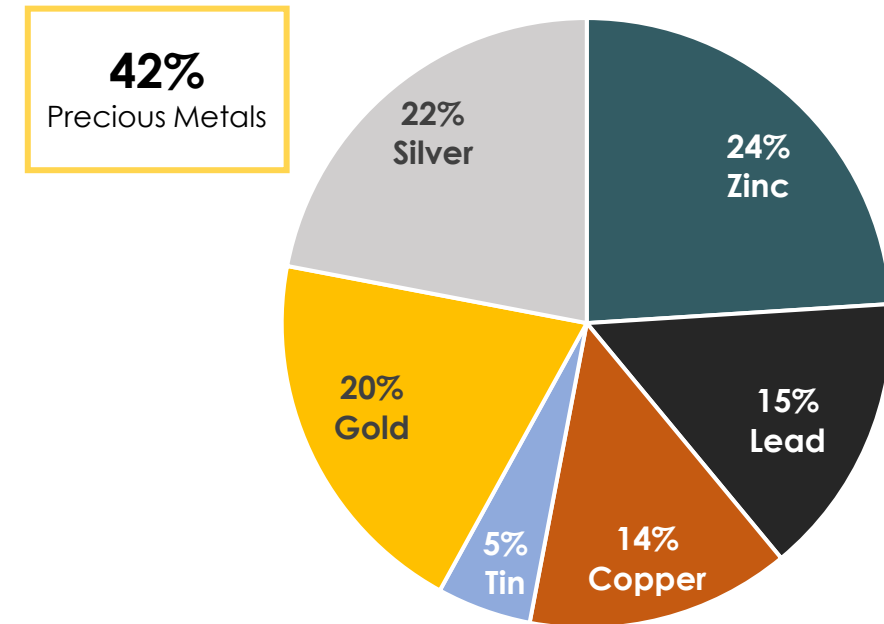
Portugal

- Developing the next VMS Deposit with District Scale Discovery and Exploration Potential on Iberian Pyrite Belt
- July 2023 Feasibility Study outlined a **NPV 8% post-tax of US\$147M** and an **IRR of 39%**¹
- Optimized Feasibility study** expected in Q3 with a **construction decision by year end**¹
- EBITDA of \$US75.5M** during the initial 5 years of operation¹
- Low Capex and low operating costs (ZnEq AISC 0.59/lb)** during the first 5 years make this a robust, tier 1 asset
- Construction Financing for 70% of capital requirements supported By UKEF/Santander**

Tier 1 AISC Cost³



Lagoa Salgada LoM Revenue by Commodity (%) at Spot Prices²



Resources

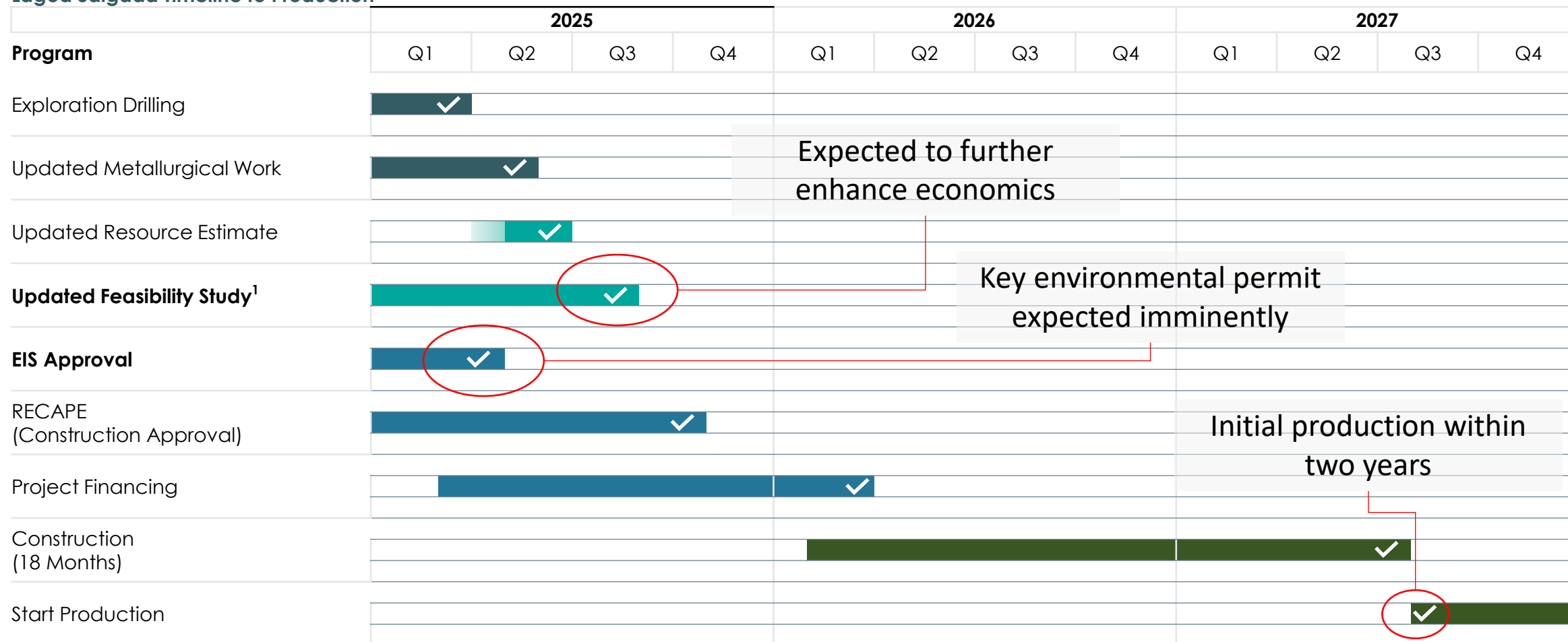
| Category | North | South |
|------------------------|----------------------|---------------------|
| Proven & Probable | 7.1 Mt @ 9.5% Zn Eq | 7.8 Mt @ 1.22% CuEq |
| Measured and Indicated | 8.9 Mt @ 10.52% ZnEq | 10 Mt @ 1.22% CuEq |
| Inferred | 0.5 Mt @ 6.62% ZnEq | 8.1 Mt @ 1.16% CuEq |

Please see appendix for full resource table and notes

LAGOA SALGADA VMS PROJECT

Rapidly Progressing to Production

Lagoa Salgada Timeline to Production



1. Based on NI 43-101 Technical Reports Published for Lagoa Salgada on July 25, 2023

LAGOA SALGADA VMS PROJECT

Rapidly Advancing an Optimized Feasibility

Optimization Strategy to Increase NPV, Reduce Capex and Operating Costs

Metallurgy

- Phase II Metallurgical Program being conducted by Wardell Armstrong
- Targeting increases recoveries, Higher Concentrate Grades and Reduced penalties elements

Resources

- New metallurgical results are targeting a higher NSR/tonne value across each domain
- May lead to minor increases in the Resources

Initial Capital

- Optimization of Equipment, Staging of capital and new layout targeting an increase in capital efficiency

Process Design and TSF Management

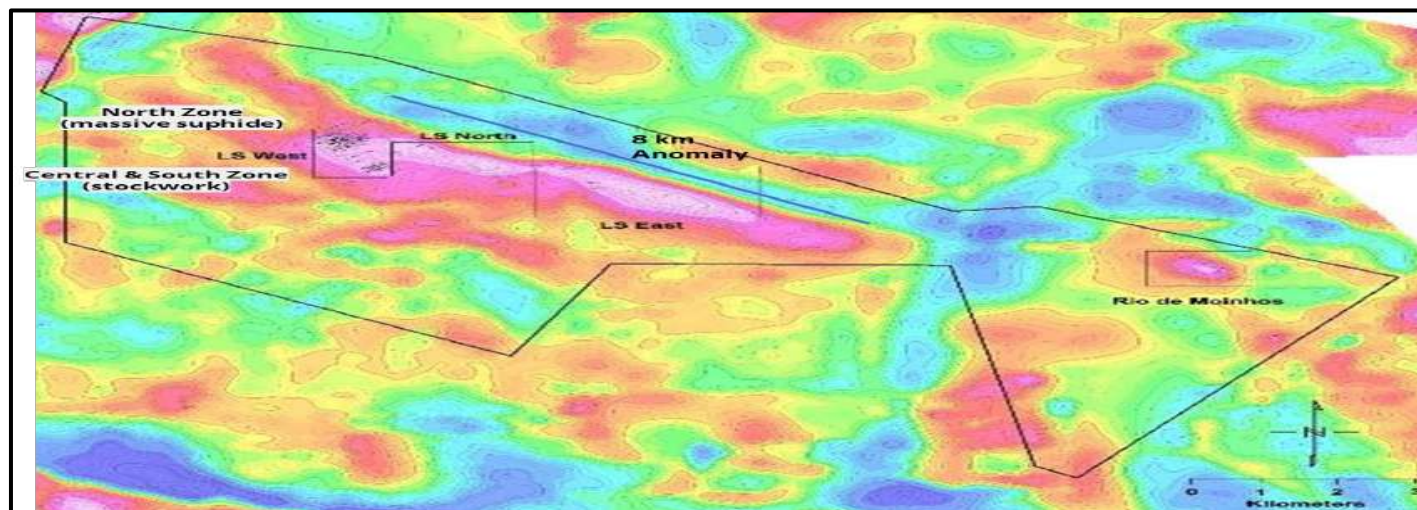
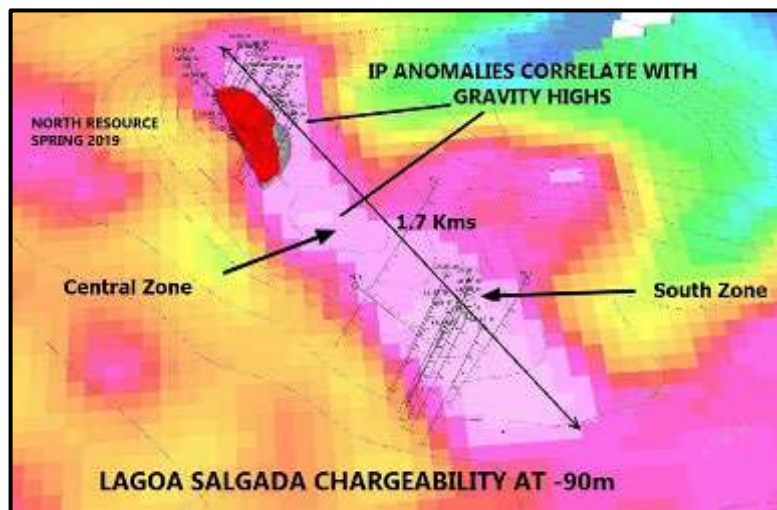
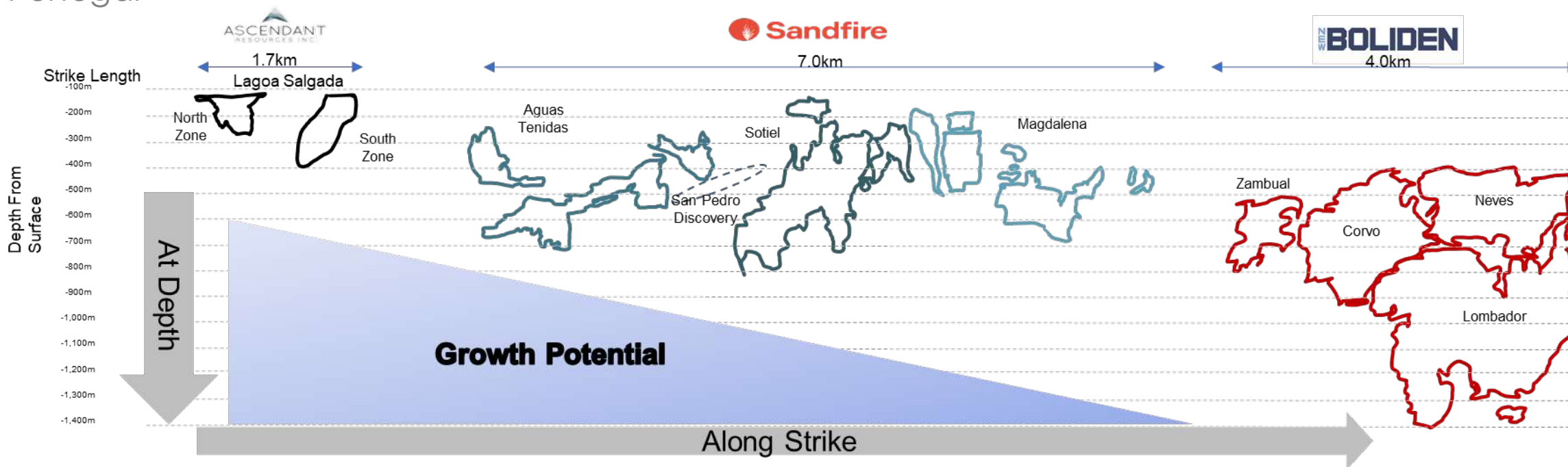
- Simplification of Design flowsheet
- Trade-off study for dry stack tailings

Mine Plan Optimization

- Trade-off for increased design capacity or staged development
- Considering 1.2MTpa – 2.0MTpa scenarios

LAGOA SALGADA VMS PROJECT

Portugal



MONT SORCIER PROJECT – Optionality for the Long Term

Green Steel and Direct Reduction Iron (“DRI”)

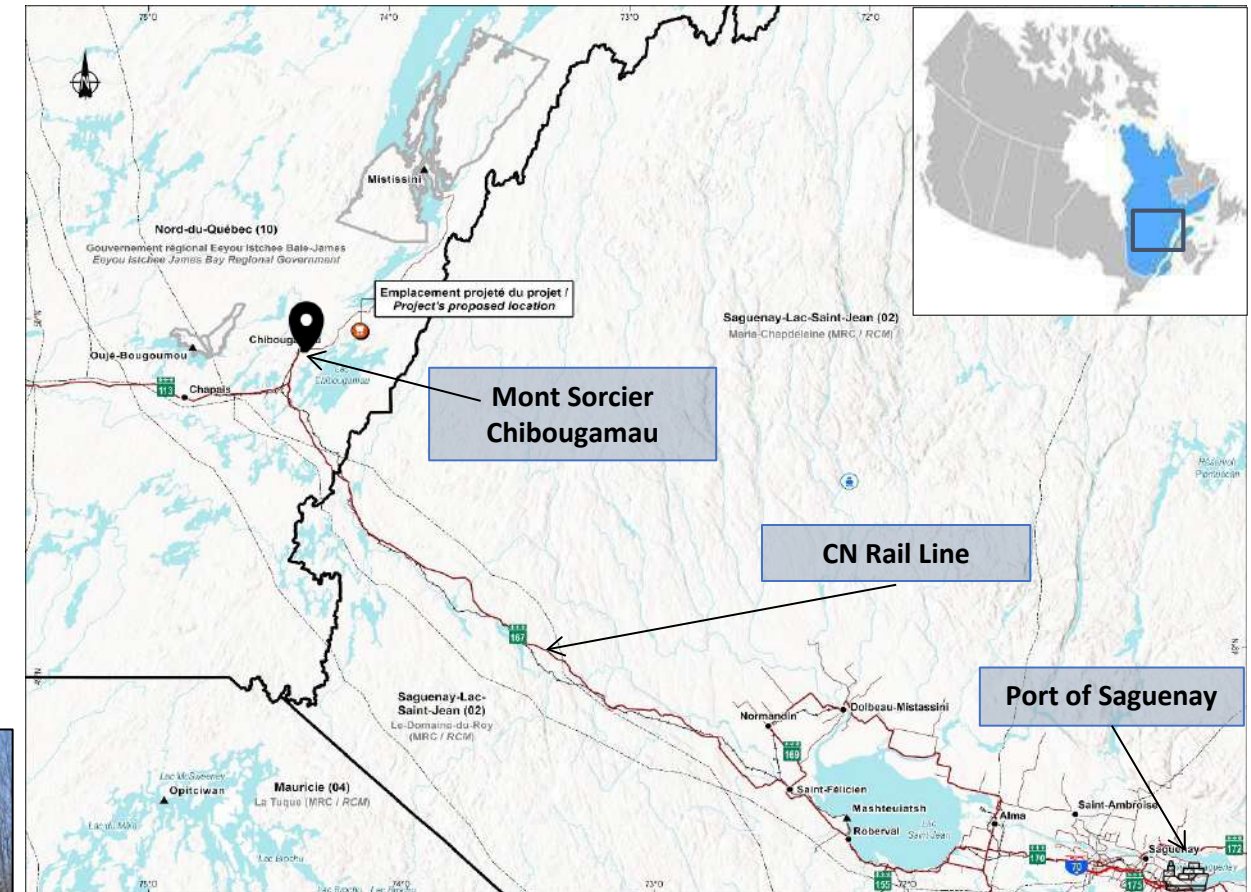
- Located 11km from Chibougamau, in Cree traditional territory, Quebec
- Site located only 25km from public rail head
- >300km of underutilized existing common carry rail line connected directly to ports
- Existing low-cost Hydro Power
- Two deep water ports - Saguenay and Quebec City - with available capacity
- Single province jurisdiction streamlines permitting
- Feasibility Study Ready to Commence



Port of Saguenay



Road to Site



Excellent Existing Infrastructure

Mont Sorcier



25km

CN Rail



370km

Port of Saguenay



MONT SORCIER IRON ORE PROJECT

Canda

- Targeted to be a **green steel producer** with production at a minimum of **5mpta of high grade, high purity, green Direct Reduction Iron concentrate** to support Green Steel manufacturing
- Recent metallurgical test works demonstrates **ability to produce high purity DRI 67% grade iron conc.** With <2.5% Silica and Alumina combined
- Mont Sorcier PEA: **CF of ~US\$350mm, FCF of ~US\$235mm** per annum for 21 years using 65% concentrate grade
- Excellent existing infrastructure** including rail, port and hydro electricity expected to lower project capex
- Feasibility Study Expected - Q1 2026** – Mont Sorcier **adds long-term option value once feasibility study is completed**
- Construction Financing for 70% of capital requirements already being supported** by UKEF/TD Bank

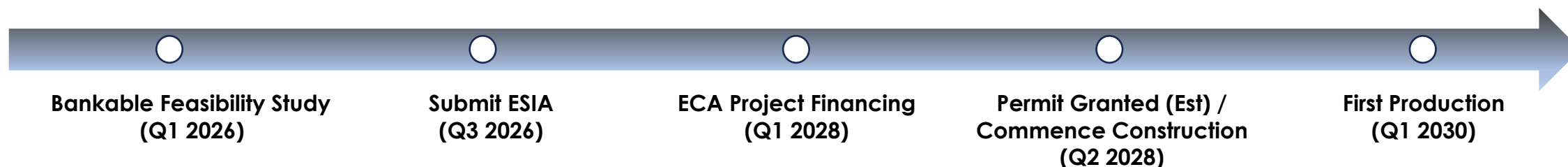
Premium Product

- High Purity 67% Iron Concentrate** significantly reduces green house gas emission in steel production
- Significant price premium expected for 67% DRI grade material** vs 62% Index price
- High Grade material to displace lower grade material** as demand increases



| PEA Summary (July 2022) | | \$US Million |
|---------------------------------------|----------------------|------------------|
| Production Summary | Unit | LOM Total / Avg. |
| Annual Production Rate | mtpa | 5.0 |
| Operating Costs | | |
| Total Cash Costs | US\$/t | \$26.0 |
| All-in Sustaining Costs (AISC) | US\$/t | \$28.2 |
| Rail Transport (FOB Port) | US\$/dmt conc | \$18.0 |
| Ocean Freight to China (CFR China) | US\$/dmt conc | \$20.0 |
| CFR China US\$/t sold | US\$/dmt conc | \$66.2 |
| Capital Costs | | |
| Initial Capital Costs | kUS\$ | \$456,000 |
| Contingency | kUS\$ | \$118,000 |
| Sustaining Capital Costs | kUS\$ | \$226,680 |
| Closure Costs | kUS\$ | \$50,400 |
| Financials | | |
| Post-Tax NPV (8%) | MUS\$ | \$1,607 |
| Post-Tax IRR | % | 43.0% |
| Post-Tax Payback | Years | 1.8 |

PAYBACK IN UNDER 2 YEARS



WELL-FUNDED TO DELIVERY

1. Cash Balance

+US\$20mm

Budgeted to end year flat after capital expenditures and debt reduction program

3. Free Cash Flow

+US\$25mm

Free cash flow of ~\$25 million per year based on 55Koz gold production at \$2,100 Au¹

2. Additional Cash to be received – from asset sale and option agreement

+US\$15mm

Guaranteed:

1. **US\$10 million** (C\$12.8 million² or C\$0.12/share) – in **June 2026**
2. **US\$5 million** (C\$6.4 million² or C\$0.06/share) by **March 2027** or earlier

+US\$10mm

Option Consideration:

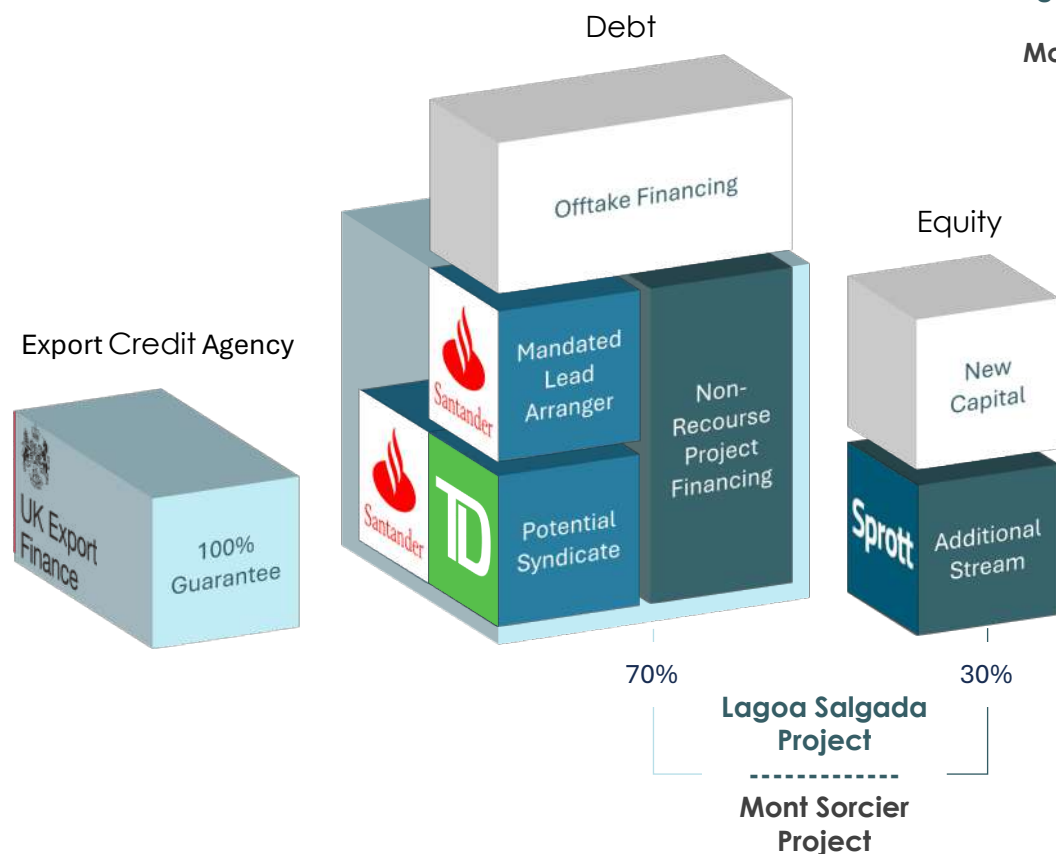
- **US\$10 million (C\$12.9m or C\$0.12/share)** upon exercising of the Option Agreement – by 2028 or earlier

1. NI 43-101 PEA Technical Report published Sep 19, 2024
2. CAD EX Rate = 1.28814

PROJECT FINANCE SUPPORT IN PLACE

Export Credit Agency Project Financing Structure

ECA Supported Project Financing Structure



Potential Offtake Partners

Lagoa Salgada

GLENCORE

TRAXYS

TRAFIGURA

ALTAMIRA

IXM

BOLIDEN

Mont Sorcier

Steel Producers

GLENCORE

TRAXYS

TRAFIGURA

Cargill

Benefits of ECA Supported Project Financing

- Typically, Long-Term & Low Cost
- Higher leverage covering working capital, pre-construction interest and additional costs
- Ability to treat Stream as Equity
- Inclusion for exploration budget in capital program

Obligations for ECA Supported Project Financing

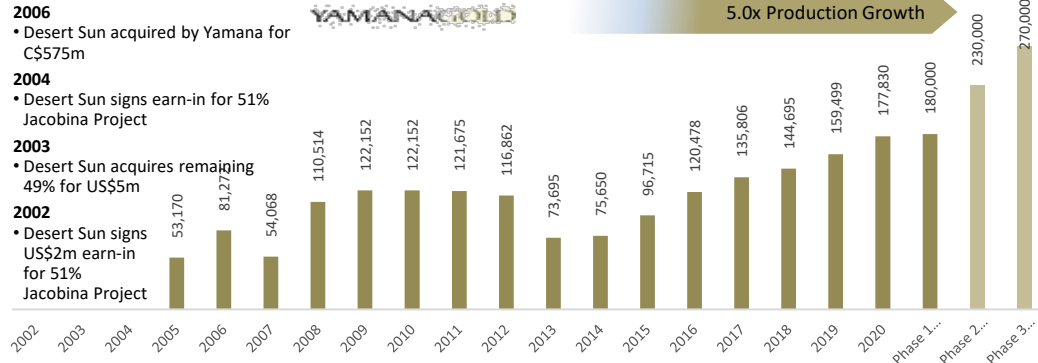
- Meeting minimum UK content requirements (+40%)
- Compliance with Global Industry Standards for Tailings Management & Equator Principles
- International Standards for Social and Environmental Impact (including climate change)
- Standard technical due diligence and credit metric compliance (DSCR >1.25x et. al.)

HISTORY OF LEADERSHIP

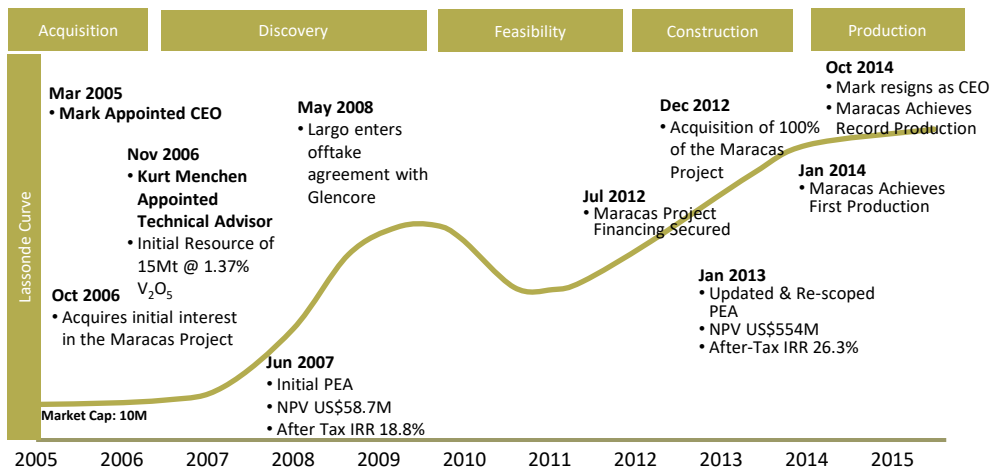
Multiple Mines Built, Expanded and Restructured



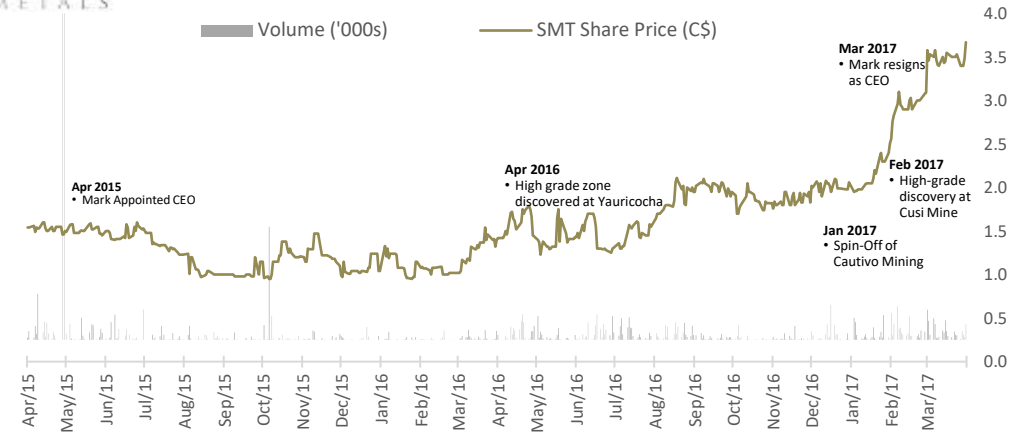
: +25x return to founders and still growing



LARGO : Full development cycle: Market Cap= +C\$2.5B High



: 2.4x for shareholders in under 2 years



Experienced operations team throughout the Americas and Europe

Mark Brennan, CEO & Co-Chairman

- Over 20 years of mining experience in Brazil
- Multiple successes in the region: Serra Metals, Largo Resources, Desert Sun

Kurt Menchen, Director, Ex-President, Brazil

- +42 years of mining experience
- 20 years as GM at the Jacobina Gold project in Brazil, key in developing Largo Resources

Casper Groenewald, COO

- Metallurgist with over 20 years of mineral processing experience in Africa and the Americas
- Part of the team that developed Largo from a greenfield project

Veronica Nohara, President, Argentina

- Over 20 years' experience working in different Latin American countries
- Former Chief Executive Officer for Minera Don Nicolas

Joao Barros, President, Ascendant Resources, Portugal

- Over 20 years' experience working in mining in Portugal in engineering
- Has been working on the development of Lagoa Salgada since 2008

Hubert Vallee, VP Project Development, Voyager Metals, Canada

- Over 20 years' experience working in Mining and Manufacturing with a focus on Iron Ore
- Worked with Consolidated Thompson (Bloom Lake) as key play in project development

CAPITAL STRUCTURE

(As at May 30, 2025)

| TSX VENTURE EXCHANGE | CERT |
|---|-------------------------|
| Share Price | C\$0.67 |
| 52 Week (Low-High) | C\$0.15 – C\$0.74 |
| Shares Outstanding | 133.6 million |
| Options | 5.8 million |
| Warrants | 1.8 million |
| RSUs & DSUs | 2.2 million |
| Fully diluted shares | 143.4 million |
| Market Capitalization | C\$89.5 million |
| Cash position (March 31, 2025) | US\$20.0 million |
| Pending Additional Cash from Sale of Monto Do Carmo | US\$15.0 million |

ANALYST COVERAGE

| BROKERAGE | ANALYST | TARGET PRICE |
|-----------|---------|--------------|
| Red Cloud | Tim Lee | C\$1.70 |

KEY SHAREHOLDERS

| OWNER | PERCENTAGE |
|--------------------|------------|
| Management & Board | 25% |
| CQS | 2% |
| EMA Fund | 1% |
| Other Institutions | 4% |
| Free Float | 68% |

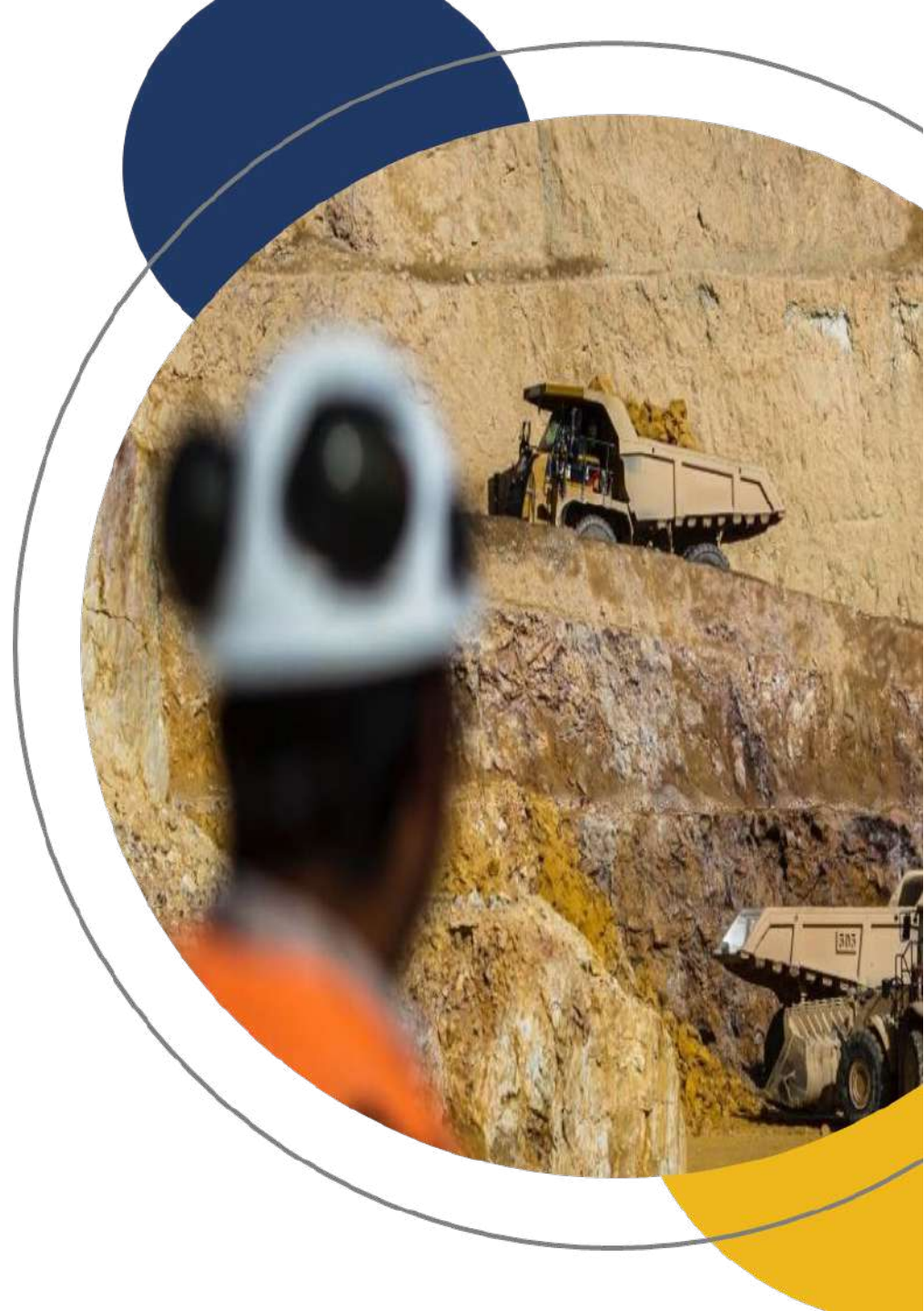
Appendix - Operations





MINERA DON NICOLAS

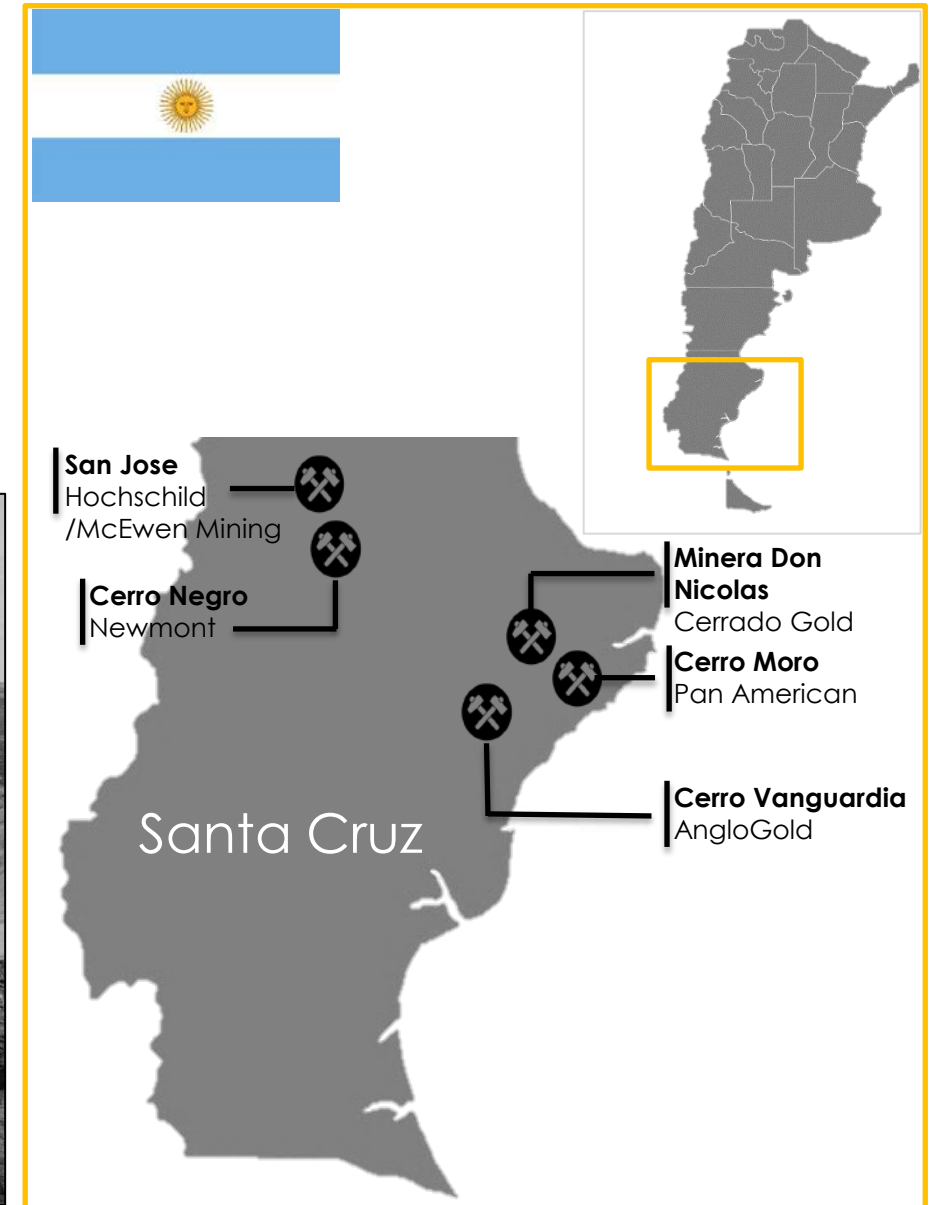
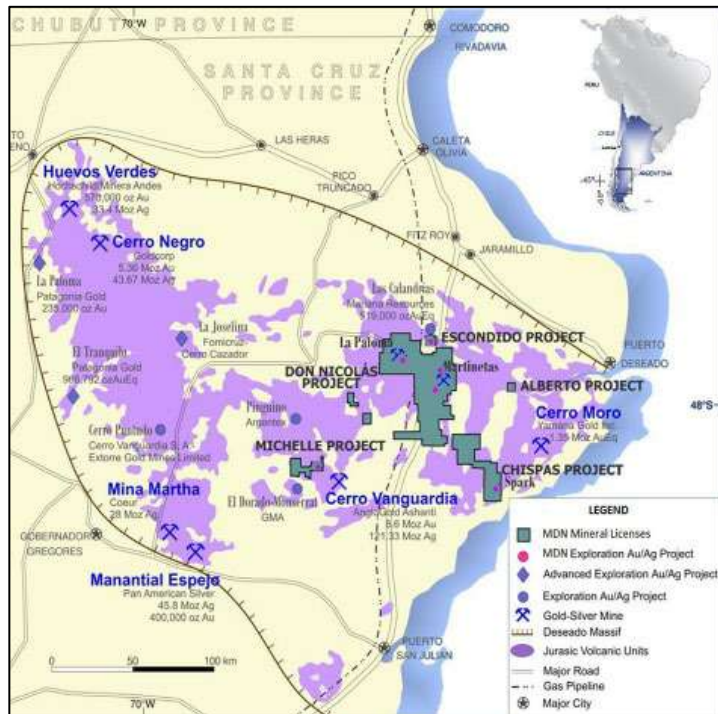
Stable Precious Metals Production and Cashflow in the
Deseado Masiff



MINERA DON NICOLAS

Extensive and Underexplored Land Package

- Largest land package in the prolific Deseado Masiff (330K hectares)
- Steady state production of ~55koz Au equiv. per year through to 2028
- Mineral Resources M&I: 490Koz, Inferred: 121Koz
- Exploration to date has only focused on near mine targets
- Underground potential development commencing in Q2 2025



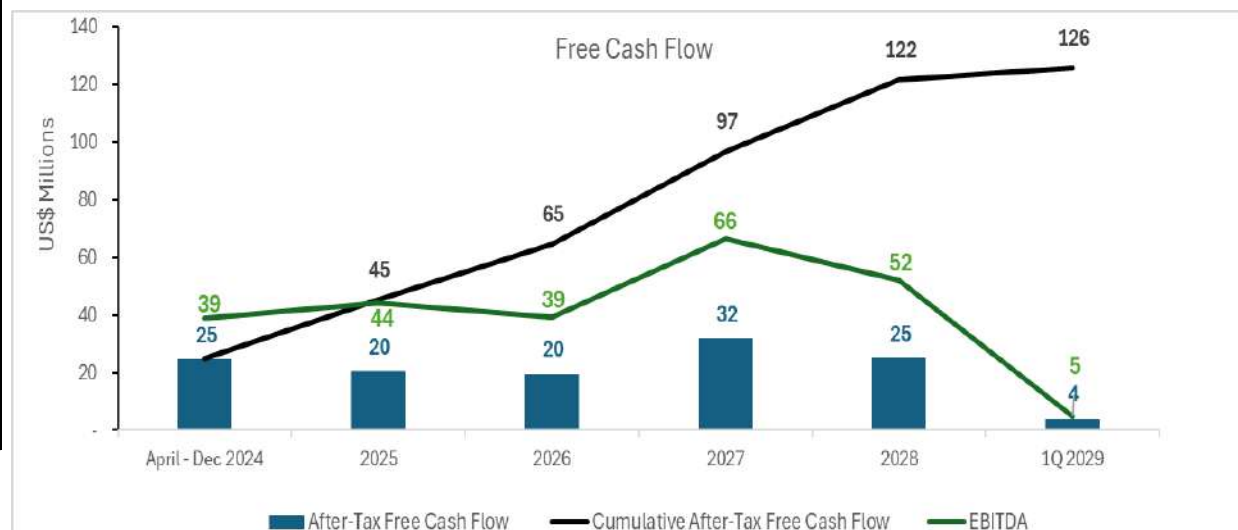
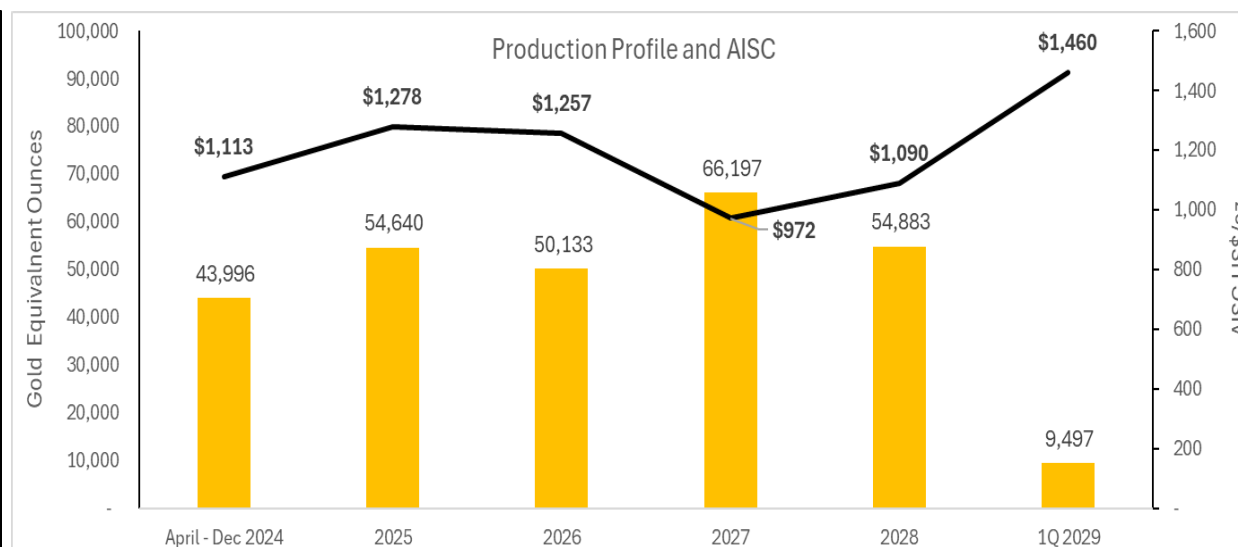
MINERA DON NICOLAS

Positive PEA and Mineral Resource Estimate

| PEA | Base Case ¹ | Spot ⁴ |
|--|------------------------|-------------------|
| Average Annual Gold Equivalent Production (ounces) | 55,869 | 55,263 |
| Mine life (years) - Mine Plan start Date 1 April 2024 | 5.0 | 5.0 |
| Total Gold Equivalent Production (ounces) | 279,345 | 276,313 |
| NPV @ 5% discount rate (millions, after-tax) | \$ 111 | 273 |
| NPV @ 8% discount rate (millions, after-tax) | \$ 105 | 258 |
| Gold Price (US\$/oz) | 2,100.0 | 3,300.0 |
| Silver Price (US\$/oz) | 25.0 | 33.1 |
| Average Annual EBITDA | \$ 49.2 M | \$106.6 M |
| Average Annual FCF | \$ 25.2 M | \$61.1 M |
| Capital Costs | | |
| Initial capital expenditure (Initial Capex) | \$ 0 M | \$ 0 M |
| Sustaining capital expenditures | \$ 9.5 M | \$ 9.5 M |
| Reclamation cost | \$ 7 M | \$ 7 M |
| Salvage Value | \$ 3.3 M | \$ 3.3 M |
| Operating Costs | | |
| Total cash cost (per ounce sold) ² | 864 | 814 |
| Mine-site all-in-sustaining cost (per ounce sold) ³ | 1,146 | 1,146 |

Notes:

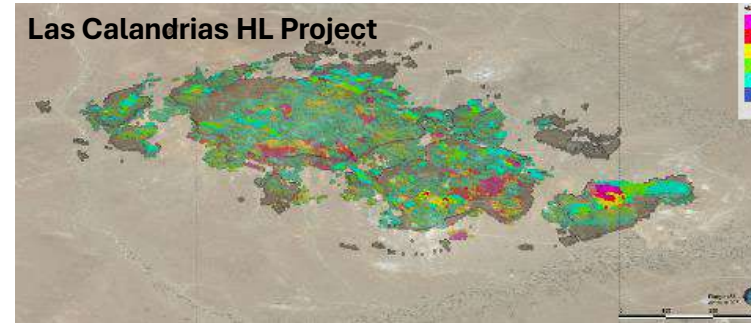
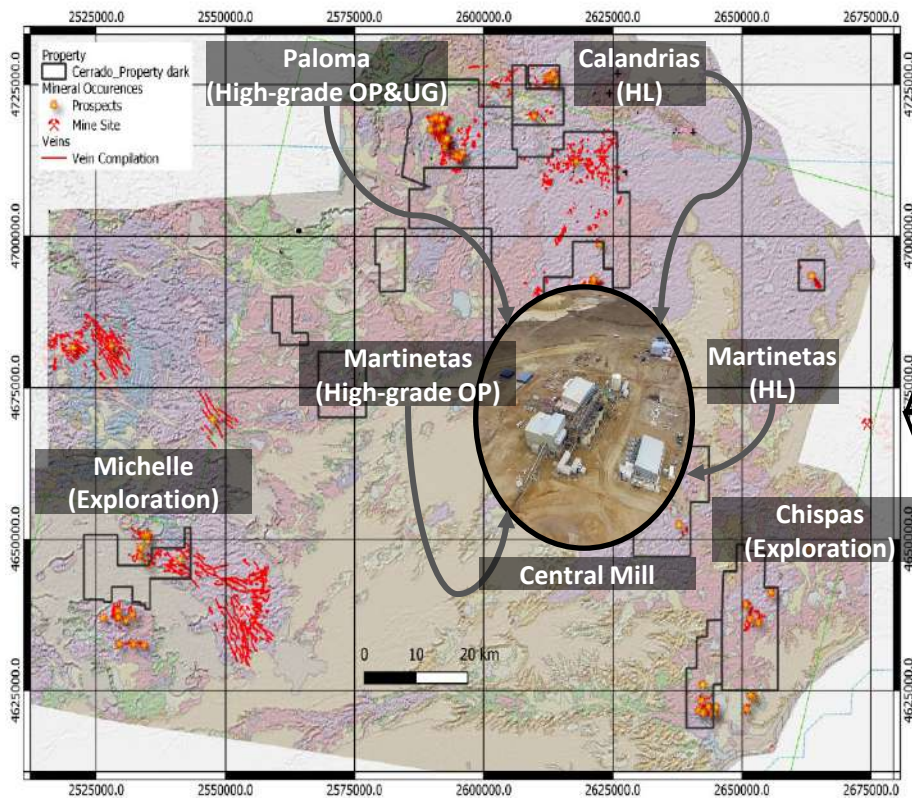
1. Sprott Streaming Agreement has been excluded from this analysis
2. Before royalties and after by-product credits
3. Include C1 cash costs, plus royalties plus sustaining capital
4. Spot Prices: \$3,300 (Au), \$33.10 (Ag) as at, April 29, 2025
5. See next Slide for Mineral Resource Table



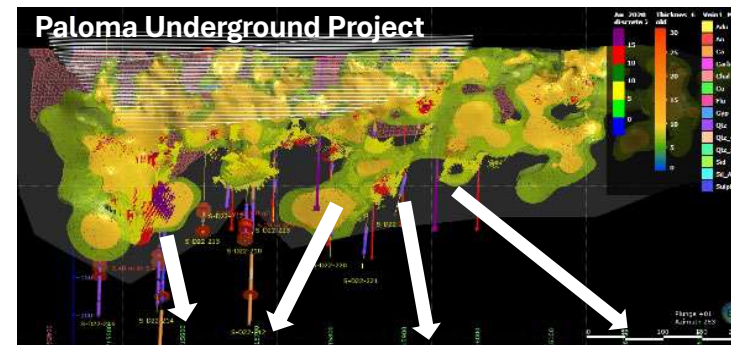
MINERA DON NICOLAS

CIL and Heap Leach Production

Hub and Spoke Production



- Additional 165koz of lower grade resources added to the mine plan
- Additional 5 years of low-cost production at ~20-25koz per annum

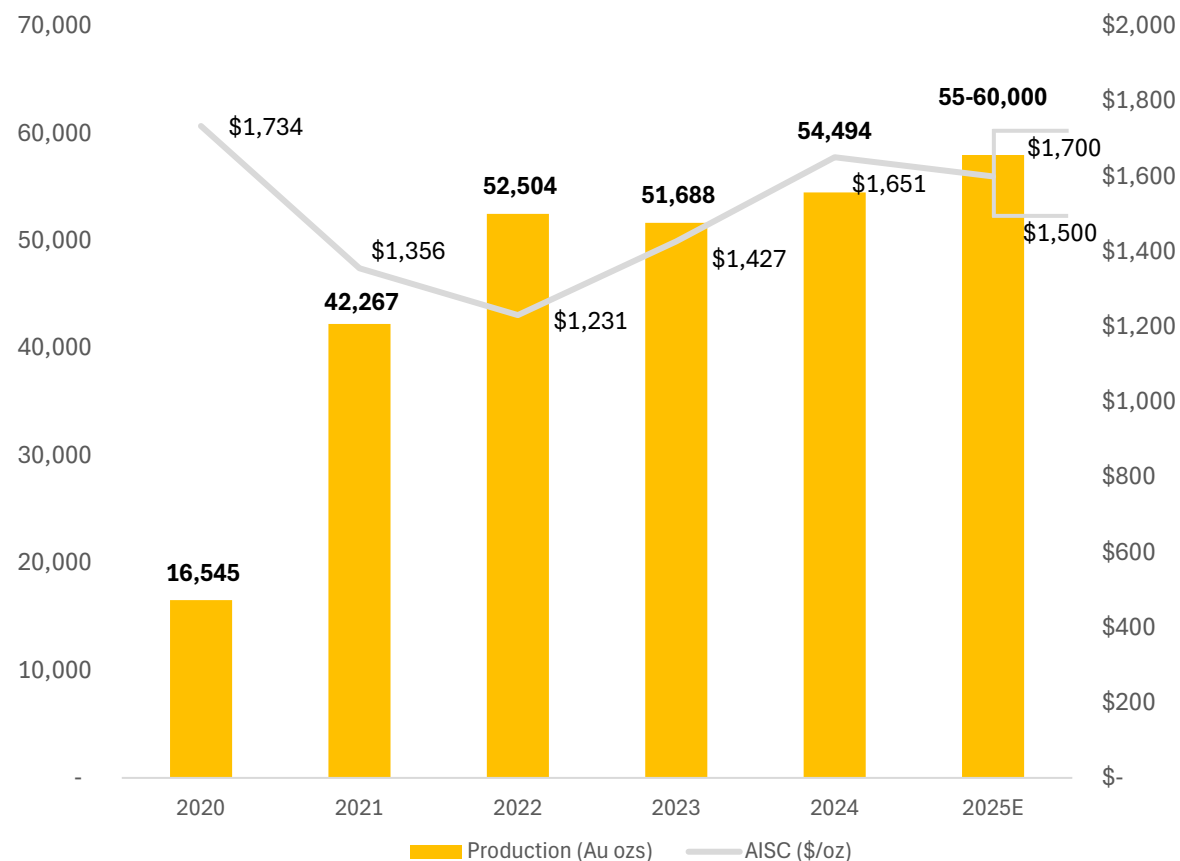


- Expected to Commence in June 2026
- Existing Pit provides direct access to the Underground for rapid development

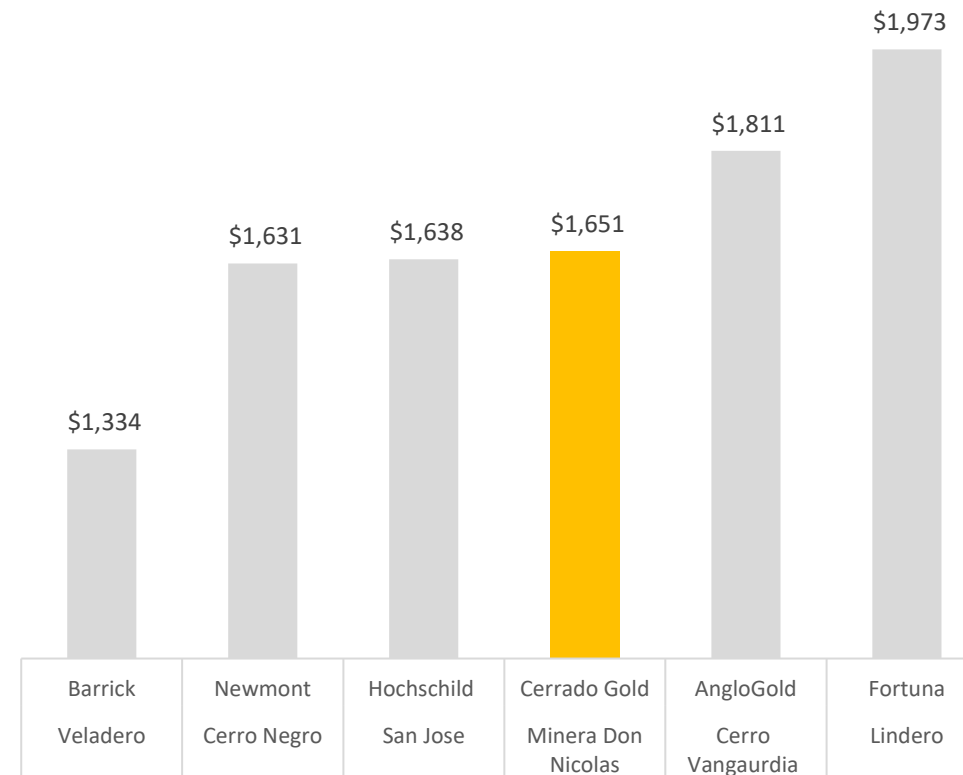
MINERA DON NICOLAS

Track Record of Operational Improvement and Competitive Costs

Operating History Post Acquisition Increased Production & Lower Costs



Competitive Producer in Argentina Amongst Peers AISC 2024



Source: Company's annual financial and MDA filings

MINERAL RESOURCES

Minera Don Nicolas Project – Effective Date: April 1, 2024

| | | | Grade Values | | Metal Content | |
|--|------------------|------------------|--------------|--------------|---------------|-----------------|
| Mine | Classification | Tonnage kt | Au g/t | Ag g/t | Au k oz | Ag k oz |
| Calandrias Sur ¹ (Open pit) | Measured | 5,192.24 | 0.91 | 17.07 | 151.32 | 2,849.04 |
| | Indicated | 7,642.16 | 1.02 | 14.16 | 249.40 | 3,479.94 |
| | M+I | 12,834.40 | 0.97 | 15.34 | 400.72 | 6,328.98 |
| | Inferred | 2,261.42 | 0.62 | 3.32 | 44.99 | 241.64 |
| Calandrias Norte ¹ (Open Pit) | Measured | 8.12 | 18.66 | 25.98 | 4.87 | 6.78 |
| | Indicated | 70.67 | 14.52 | 22.79 | 32.98 | 51.79 |
| | M+I | 78.79 | 14.94 | 23.12 | 37.85 | 58.57 |
| | Inferred | 10.58 | 10.69 | 12.17 | 3.64 | 4.14 |
| Zorro ¹ (Open pit) | Measured | 69.09 | 2.15 | 8.74 | 4.78 | 19.42 |
| | Indicated | 136.50 | 1.32 | 7.38 | 5.80 | 32.39 |
| | M+I | 205.59 | 1.60 | 7.84 | 10.58 | 51.81 |
| | Inferred | 120.88 | 0.81 | 6.38 | 3.16 | 24.79 |
| Depleted Satellites ^{2 3} (Open Pit) | Measured | 29.91 | 2.04 | 0.00 | 1.96 | 0.00 |
| | Indicated | 14.99 | 1.80 | 0.00 | 0.87 | 0.00 |
| | M+I | 44.90 | 1.96 | 0.00 | 2.83 | 0.00 |
| | Inferred | 1,117.03 | 1.62 | 1.72 | 58.14 | 61.62 |
| Paloma Trend ¹ (Underground) | Measured | 128.86 | 4.73 | 18.98 | 19.58 | 78.62 |
| | Indicated | 145.96 | 4.00 | 15.97 | 18.78 | 74.94 |
| | M+I | 274.82 | 4.34 | 17.38 | 38.36 | 153.56 |
| | Inferred | 88.91 | 3.93 | 13.15 | 11.22 | 37.58 |
| Total | Measured | 5,428.22 | 1.05 | 16.93 | 182.52 | 2,953.87 |
| | Indicated | 8,010.27 | 1.20 | 14.13 | 307.82 | 3,639.05 |
| | M+I | 13,438.50 | 1.13 | 15.26 | 490.34 | 6,592.92 |
| | Inferred | 3,598.83 | 1.05 | 3.20 | 121.15 | 369.77 |
| Stockpiles ⁴ | Measured | 0.00 | 0.00 | 0.00 | 0.00 | 0.00 |
| | Indicated | 0.00 | 0.00 | 0.00 | 0.00 | 0.00 |
| | M+I | 0.00 | 0.00 | 0.00 | 0.00 | 0.00 |
| | Inferred | 951.74 | 0.54 | 2.05 | 16.57 | 62.58 |

Notes:

¹ Included in economic evaluation, ² Not included in economic evaluation, ³ Satellites include Armadillo, Baritina, Baritina NE, Cerro Oro, Coyote,, Choique, Mara, and Trofeu, ⁴ Include the stocks from: Armadillo, Cerro Oro, Coyote, Choique, and Mara.

MINERAL RESOURCES NOTES

Minera Don Nicolas Project – Effective Date: April 1, 2024

Notes to Mineral Resources

Mineral Resource estimates were prepared by the May 10, 2014 edition of the Canadian Institute of Mining, Metallurgy and Petroleum (or CIM) Definition Standards for Mineral Resources and Mineral Reserves (“2014 CIM Definition Standards”) and disclosed in accordance with National Instrument 43-101 – Standards of Disclosure for Minerals Project (“NI 43-101”).

The Qualified Persons for the estimation of Mineral Resources are Calandrias Sur, Calandrias Norte, Zorro, Paloma Trend and Stockpiles - Orlando Rojas, P.Geo, Member AIG, a GeoEstima SpA employee and Armadillo, Baritina, Baritina NE, Cerro Oro, Coyote, Choique, Mara and Trofeu - Sergio Gelcich, P.Geo, MAusIMM (CP) Geo, Vice President, Exploration, a Cerrado Gold employee.

Mineral Resources have an effective date as of: (a) April 1st, 2024, for Calandrias Sur, Calandrias Norte, Zorro, Paloma Trend, Armadillo, Baritina, Baritina NE, Cerro Oro, Coyote, Choique, and Trofeu; (b) August 31st, 2020, for Mara satellite.

Mineral Resources estimated using an average long-term metal price of US\$2,100.0/oz of Au and US\$25.0/oz of Ag. For Mara satellite, an average long-term metal price of US\$1,550.0/oz of Au is considered, assuming a mining cost of US\$2.65/t, plant cost of US\$32.0/t, and selling costs of US\$127.0/t.

Recoveries depend on the type of host mineralization and the extraction method being utilized for the minerals. For the carbon-in-leach (CIL) process, Au recovery is based on historical metallurgical recovery, which is 90% for Au and 61% for silver. For the Heap Leach process (HL), Au recovery is based on metallurgical test works and depends on the zone. Au recovery is 70% in the Oxide zone, 60% in the Transitional zone, and 40% in the Primary zone. The silver recovery is 30% in all zones.

Mineral Resources in open pit are reported within pit shell constrain and above a cut-off grade: Calandrias Sur has a variable cut-off - 0.27 g/t Au for the Oxidized zone, 0.31 g/t Au for the Transition zone and 0.46 g/t Au for Primary zone; Calandrias Norte - 1.46 g/t Au; Zorro, Armadillo, Baritina, Baritina NE, Cerro Oro, Coyote, Choique, Mara and Trofeu - 0.3 g/t Au. In Paloma Trend, Mineral Resources are reported within a cut-off grade of 1.95 g/t for underground mining shapes. A minimum mining width of 1.5m was used for resource shapes.

The estimated costs are: Calandrias Sur - plant cost of US\$11.08/t; Calandrias Norte – plant cost of US\$78.33/t; Zorro – plant cost varying from US\$ 13.35 for HL process and US\$ 68.20 for CIL process; Depleted Satellite – plant cost of US\$40.0/t. The selling costs of US\$242.90/t and mining costs of US\$3.50/t was assumed for all open pit costs of US\$3.50/t was assumed for all open pit were assumed for all open-pit mining. For underground shapes, the mining costs are US\$40.0/t, plant costs are US\$65.0/t and selling costs are US\$242.9/t. The exchange rate considered is ARG 917.25 / 1 USD.

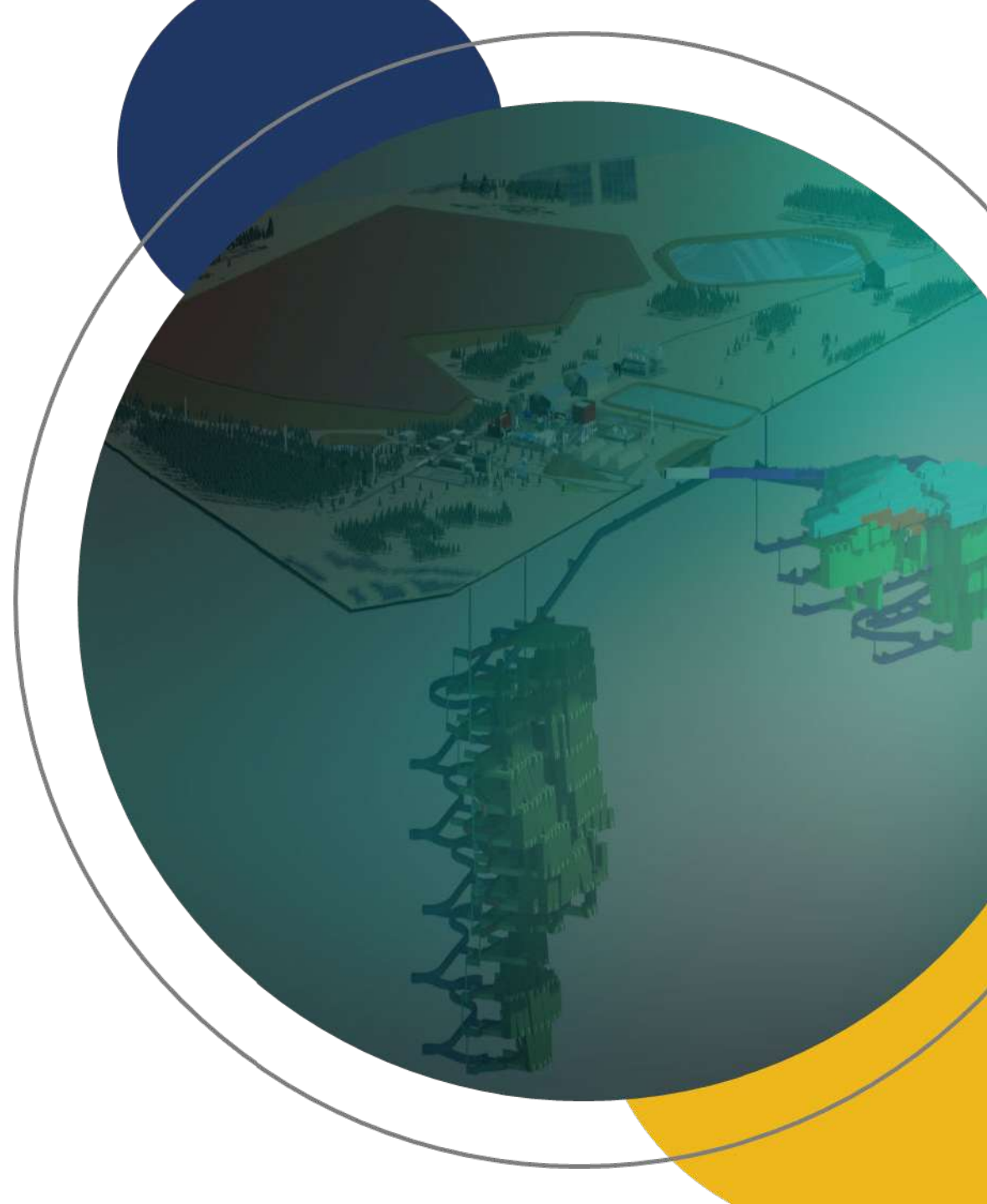
Density was assigned and interpolated based on specific gravity values by domain.

Numbers may not be added due to rounding.



LAGOA SALGADA PROJECT

Uncovering The Next World Class VMS Deposit in the Iberian Pyrite Belt with near-term production potential

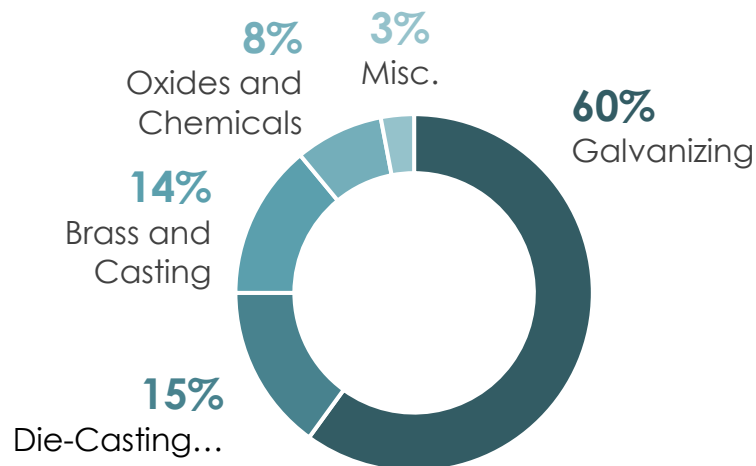


LAGOA SALGADA VMS PROJECT

Critical Metals Production

Zn
Zinc

Zinc's global demand is expected to steadily increase while supply is expected to continue to fall systematically starting in 2025 creating a **6.9 Mil tonne global supply gap by 2040**¹. Zinc's unique properties make it an extremely versatile metal, essential for everyday life, playing a critical role in:



Zinc's unique properties make it an essential metal for everyday life. Zinc plays a crucial role in:

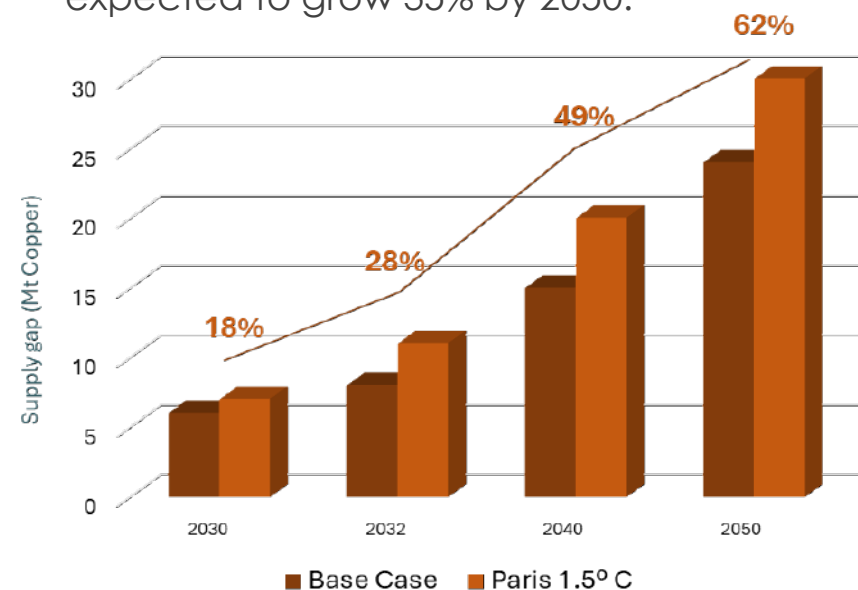
- Renewable Energy
- Transportation
- Food Security
- Energy Storage
- Healthcare
- Infrastructure
- Industrial Applications
- Electronics

Source: Gov't of Canada "Zinc Facts" 2023

Cu
Copper

Copper Supply and Demand Gap (2030-2050)

9.7 Mil tonnes of new copper supply is needed over the next 10 years. Global demand is expected to grow 35% by 2050.



\$23B/Year

Is needed in new projects' investment, to close the copper supply gap

Sources: Wood Mackenzie, CRU, IZA, BGRIMM, SMM, Teck

LAGOA SALGADA VMS PROJECT

Uncovering the next World Class VMS Deposit



aicep Portugal Global



District Scale Discovery

- Iberian Pyrite Belt ("IBP") is **the largest VMS district**; host to many **world class deposits that continue to grow**
- Initial anchor Discovery, **Venda Nova continues to grow**
- Drilling new Geophysical anomalies with **potential for multiples of Resource expansion**
- Limited exploration to date: Very high ratio of tonnes found (27 tonnes) to metres drilled (approx. 401 metres): 0.67511t/m

District Scale Exploration Potential

- Large and prospective land package in the IBP
- Venda Nova is open in all directions, **under drilled and under explored**
- Numerous drill targets identified for the next discovery

Anchored by Robust Economics

- July 2023 Feasibility Study outlined a **NPV 8% post-tax of US\$147M** and an **IRR of 39%**
- Significant annual EBITDA generation of \$US75.5M during the initial 5 years of operation
- Low Capex and low operating costs make this a robust asset

Right Jurisdiction

- All necessary infrastructure in place: power, water, roads and port all located adjacent to the project
- Granted Project of National Interest in Portugal:** a mining jurisdiction with favourable labour rates and tax regime

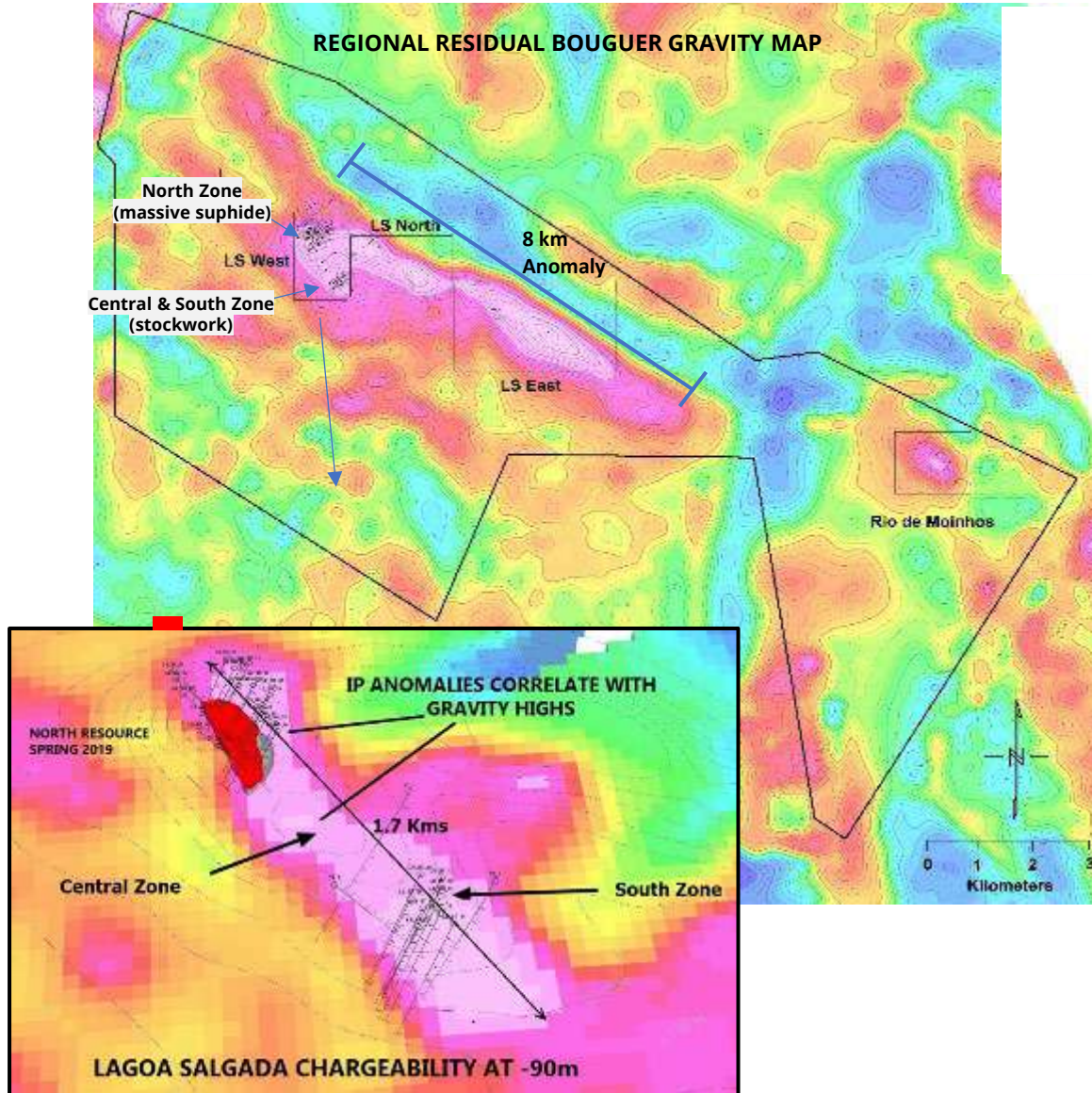
Financed to Construction

- UK Export Credit Agency and Santander have been Mandated as Lead Arranged for Non-Resource Project Financing for up to 70% of Upfront Capital Requirements



LAGOA SALGADA VMS PROJECT

Large Underexplored Land Package with significant future Potential



Strong Correlation between Induced Polarization (IP) results and mineralization

- 2018 IP survey identified **1.7km long by 200-300m wide chargeability anomaly** covering the North, South and Central Zones that make up the Mineral Resource Deposits, located in LS West area.
- Strong correlation between IP and drilling** proven by success in extension of massive sulphides in North Zone.
- Very high ratio of tonnes found (27 tonnes) to metres drilled (approx. 401 metres): 0.6751 t/m
- Strong IP anomaly in Central and South Zones associated with gravity anomaly.
- IP 3D model suggests strong anomaly and future target east of the Stockwork Zone.
- Gravity anomalies identified in the LS North, LS East and Rio de Moinhos satellite areas covering potential strike length of 8km.

MINERAL RESERVES

Lagoa Salgada Project – Effective Date: July 24, 2023

Mineral Reserves by Domain

| Zone | Lithology | Mass (kt) | NSR (\$/t) | Cu (%) | Pb (%) | Zn (%) | Sn (%) | Ag (g/t) | Au (g/t) |
|---------------|-----------------------|---------------|------------|-------------|-------------|-------------|-------------|--------------|-------------|
| North | Gossan | 1,197 | 84 | 0.10 | 2.39 | 0.41 | 0.25 | 51.72 | 1.02 |
| | Transition | 883 | 107 | 0.98 | 2.23 | 0.23 | 0.18 | 108.93 | 1.14 |
| | Massive Sulphides | 4,433 | 87 | 0.25 | 2.73 | 3.60 | 0.12 | 62.34 | 0.68 |
| | Stringer | 547 | 19 | 0.23 | 0.18 | 0.54 | 0.06 | 13.39 | 0.06 |
| | Total North | 7,060 | 84 | 0.31 | 2.41 | 2.40 | 0.14 | 63.57 | 0.74 |
| South | Stockwork | 7,763 | 50 | 0.41 | 0.71 | 1.27 | - | 14.63 | 0.05 |
| | Total South | 7,763 | 50 | 0.41 | 0.71 | 1.27 | - | 14.63 | 0.05 |
| Lagoa Salgada | Total Reserves | 14,823 | 66 | 0.36 | 1.52 | 1.81 | 0.07 | 37.46 | 0.38 |

For each relevant product, its net value is estimated as the sum of the revenue streams generated by its contributing metal recovered masses (i.e., zinc, lead, copper, silver, gold, and tin) minus all costs of metal refining, concentrate treatment, element penalties, concentrate freight, and other relevant deductions and charges.

$$NSR \left(\frac{USD}{t} \right) = \frac{\sum_{i=1}^n ((Met_i \times \%Pay_i \times \%Rec_i) - TC - FC - \sum_{i=1}^n (RC_i) - \sum_{j=1}^k (Ded_j))}{Mass}$$

Where:

- i: Saleable Payable metal (i.e., Zn, Pb, Cu, Ag, Au, Sn) in product.
- j: Penalty metal (i.e., Zn, Pb, Cu, Ag, Au, Sn) in j-eth product.
- Met: In-situ metal mass.
- %Pay: Percentage of payable metal mass.
- %Rec: Percentage of recovered metal in product.
- TC: Treatment or smelting charge per dry tonne of product.
- FC: Freight charge per dry tonne of product.
- RC: Refining and shipment cost of payable metal.
- Ded: Deleterious metal deduction.

Metal Prices:

- Zn price – 2,646 USD/t,
- Pb price – 2,205 USD/t
- Cu price – 7,716 USD/t
- Ag price – 22,00 USD/oz
- Au price – 1,700 USD/oz
- Sn price – 26,455 USD/lb

MINERAL RESOURCES

Lagoa Salgada Project – Effective Date: July 24, 2023

Mineral Resources by Domain

| Zone | Category | Mass (kt) | NSR (\$/t) | Zn (%) | Pb (%) | Cu (%) | Sn (%) | Ag (g/t) | Au (g/t) | ZnEq (%) |
|-------|----------------------|--------------|---------------|-----------|-----------|-----------|-------------|-------------|-------------|-------------|
| North | Gossan | 1,890 | 109 | 0.46 | 2.51 | 0.10 | 0.26 | 44.4 | 0.86 | 8.38 |
| | Transition | 920 | 108 | 0.25 | 2.47 | 1.08 | 0.20 | 121.6 | 1.24 | 13.27 |
| | Massive Sulphides | 5,460 | 144 | 3.79 | 2.90 | 0.28 | 0.13 | 66.5 | 0.72 | 11.58 |
| | Stringer | 630 | 45 | 0.75 | 0.24 | 0.48 | 0.08 | 22.1 | 0.06 | 3.82 |
| | Measured + Indicated | 8,900 | 126 | 2.50 | 2.58 | 0.34 | 0.16 | 64.4 | 0.75 | 10.52 |
| | Gossan | 350 | 81 | 0.42 | 1.67 | 0.10 | 0.10 | 36.9 | 0.79 | 5.77 |
| | Transition | 70 | 76 | 0.27 | 2.12 | 0.84 | 0.14 | 74.3 | 1.14 | 10.74 |
| | Massive Sulphides | 60 | 89 | 2.78 | 1.47 | 0.11 | 0.07 | 33.6 | 0.40 | 6.73 |
| | Stringer | 10 | 45 | 0.58 | 0.38 | 0.46 | 0.13 | 29.4 | 0.20 | 4.75 |
| | Inferred | 490 | 81 | 0.68 | 1.70 | 0.22 | 0.11 | 42.0 | 0.83 | 6.62 |
| Zone | Category | Mass (kt) | NSR (\$/t) | Zn (%) | Pb (%) | Cu (%) | Ag (g/t) | Au (g/t) | CuEq (%) | |
| South | C1 FR | 6,430 | 63 | 1.26 | 0.75 | 0.40 | 13.13 | 0.07 | 1.21 | |
| | C2 FR | 2,500 | 68 | 1.23 | 0.64 | 0.50 | 15.58 | 0.13 | 1.28 | |
| | C3 FR | 1,110 | 63 | 1.17 | 0.54 | 0.39 | 20.77 | 0.04 | 1.16 | |
| | Indicated | 10,040 | 64 | 1.24 | 0.70 | 0.42 | 14.58 | 0.08 | 1.22 | |
| | C1 FR | 830 | 50 | 0.47 | 0.23 | 0.61 | 12.26 | 0.04 | 1.04 | |
| | C2 FR | 3,660 | 62 | 0.96 | 0.42 | 0.54 | 17.32 | 0.04 | 1.20 | |
| | C3 FR | 3,640 | 60 | 0.69 | 0.22 | 0.67 | 16.62 | 0.06 | 1.16 | |
| | Inferred | 8,130 | 60 | 0.79 | 0.31 | 0.60 | 16.49 | 0.07 | 1.16 | |

1. Mineral resources unlike mineral reserves do not have demonstrated economic viability. The estimate of mineral resources may be materially affected by environmental, permitting, legal, title, taxation, socio-political, marketing, or other relevant issues.

2. The mineral resources have been estimated in accordance with the CIM Best Practice Guidelines (2019) and the CIM Definition Standards (2014). Coherent and contiguous mining shapes backing reasonable prospect for economic extraction were considered.

3. Mineralized Zones: Gos=Gossan, tMS= transition massive sulphides pMS= primary massive sulphides, Str=Stringer, FR= -Fissural Remobilizations.

4. ZnEq% = ((Zn Grade*26.46)+(Pb Grade*22.05)+(Cu Grade * 77.16)+(Au Grade*54.66)+(Ag Grade*0.71)+(Sn Grade * 264.55))/2

5. CuEq% = ((Zn Grade*26.46)+(Pb Grade*22.05)+(Cu Grade * 77.16)+(Au Grade*54.66)+(Ag Grade*0.71)+(Sn Grade * 264.55))/77.16

6. Metal Prices: Cu \$7,716/t, Zn \$2,646/t, Pb \$2,205/t, Au \$1,700/oz, Ag \$22.00/oz, Sn \$26,455/t.

7. NSR-MRE: Gos= ((Sn%*0.40)*Sn\$)+((Pb%*0.20)*Pb\$)+((Au ppm*0.91)*Au\$)+((Ag ppm*0.89)* Ag\$)

tMS= ((Sn%*0.40)*Sn\$)+((Pb%*0.50)*Pb\$)+((Ag ppm*0.65)* Ag\$)+((Zn%*0.5)*Zn\$)

pMS= ((Sn%*0.40)*Sn\$)+((Pb%*0.60)*Pb\$)+((Ag ppm*0.45)* Ag\$)+((Zn%*0.70)*Zn\$)

str= ((Cu%*0.60)*Cu\$)+((Pb%*0.5)*Pb\$)+((Ag ppm*0.4)* Ag\$)+((Zn%*0.70)*Zn\$)

South Deposit= ((Cu%*0.65)*Cu\$)+((Zn%*0.75)*Zn\$)+((Pb%*0.65)*Pb\$)+((Au ppm*0.05)*Au\$)+((Ag ppm*0.80)*Ag\$)

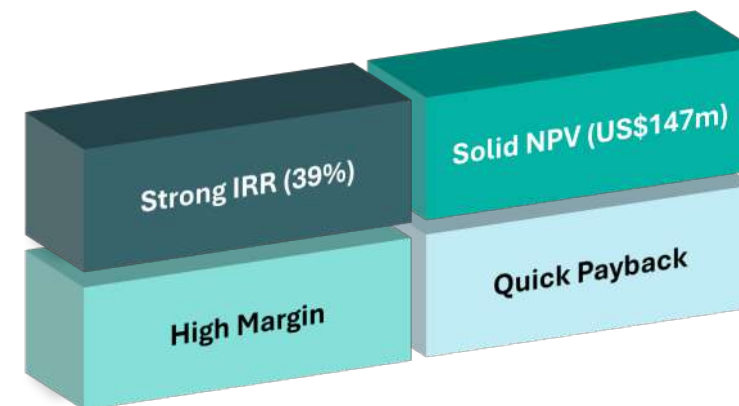
8. NSR-MRE cut-off: Gos= \$48.24, tMS= \$46.54, pMS= \$41.06, str= \$37.83, South Deposit= \$37.83

LAGOA SALGADA VMS PROJECT FEASIBILITY STUDY

Robust Economics Demonstrated for Venda Nova, Stated on a 100% Basis

Feasibility Study Key Highlights* July 2023

| | |
|--|----------------|
| Project IRR after-tax | 39% |
| NPV_{8%} after-tax | \$147 million |
| Payback period | 2 years |
| Mine Life | 14.5 years |
| All in Sustaining Cost - First 5 Years | \$0.59/lb ZnEq |
| Average EBITDA - First 5 Years | \$76 million |
| Initial Capital Expenditure - Including Contingency | \$164 million |
| Average ZnEq Payable Production – First 5 years | 124 mm lbs pa. |
| Average ZnEq Payable Production -LOM | 77 mm lbs pa. |
| Total Equivalent Production | 1,155 mm lbs |



Opportunity for further optimization to further enhance Project economics and operational efficiencies target for completion by Q2 2024.

Potential for material expansion with future exploration work to increase resources, extend mine life and increase the scale of the outlined operation.

| | Zn | Pb | Cu | Au | Ag | Sn |
|---|------------------------|-----------------------|-------------------------|--------------------------|------------------------|------------------------|
| Feasibility Metal Price Assumption | \$1.20/lb | \$1.00lb | \$3.50/lb | \$1,700/oz | \$22.0/oz | \$12.00/lb |
| Long Term Consensus Pricing ¹ | \$1.21/lb (+1%) | \$0.92lb (-8%) | \$4.20/lb (+20%) | \$2,184/oz (+28%) | \$27.4/oz (25%) | \$12.81/lb (7%) |
| Total Metal Production | 381,018 kt | 259,428 kt | 50,965 kt | 96 koz | 9,826 koz | 8,800 kt |

Note: The Technical Report for the Preliminary Economic Assessment of the Lagoa Salgada project was prepared in accordance with NI 43-101 and is available on the Company's website and SEDAR. MS = Massive Sulfide, G = Gossan.

1. CIBC Analyst Consensus Commodity Forecast – Jan 2025: Sn values sourced from BMO

LAGOA SALGADA VMS PROJECT

Clear and Transparent Permitting – Well Advanced



aicep Portugal Global



Definitive Exploitation Rights Issued Nov 8, 2021

- Contract term for 20 years renewable for two extension periods of 15 years each;
- 3% royalty on the value of concentrate
 - 2/3 being paid to the DGEG and 1/3 being paid to the Municipalities
- Reclamation bonding not required until 5 (five) years after the start of the commissioning of the mine

Project Of National Interest Issued April 4, 2022

- PIN recognition provides expedited procedures and shorter implementation periods for permitting and construction
- Emphasizes strong local and Government support
- Lagoa Salgada is the first mining project to receive recognition of this kind in Portugal

Environmental Permitting

(Expected Q1, 2025)

(Expected Q3, 2025)

| | PDA (Approved May 28, 2022) | EIA (Under analysis by APA) | RECAPE |
|--------------------|--|--|---|
| Regulator Response | 45 days | 180 days | 90 days |
| | <ul style="list-style-type: none"> Scope of the EIA Approved Guarantees Authority commitment to the scope Ascendant submitted during Q122 | <ul style="list-style-type: none"> Environmental Impact Assessment ("EIA") Issued: Defines area of impact Environmental management Procedures for construction and operation | RECAPE issuing: <ul style="list-style-type: none"> Allows construction of the project |

- Target EIA approval date is February 28, 2026

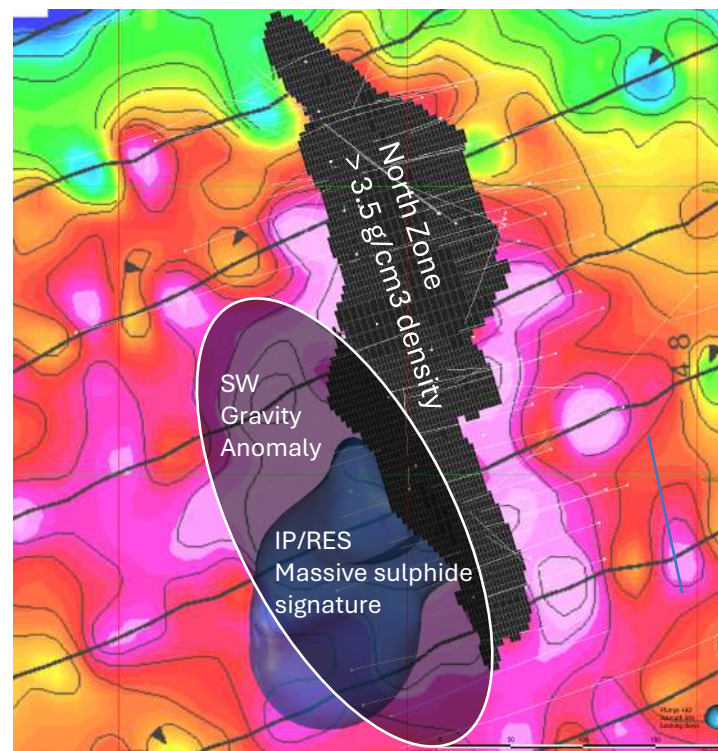
LAGOA SALGADA VMS PROJECT

Gravity Survey Results Identify High Impact Near Deposit Massive Sulphide Exploration Targets

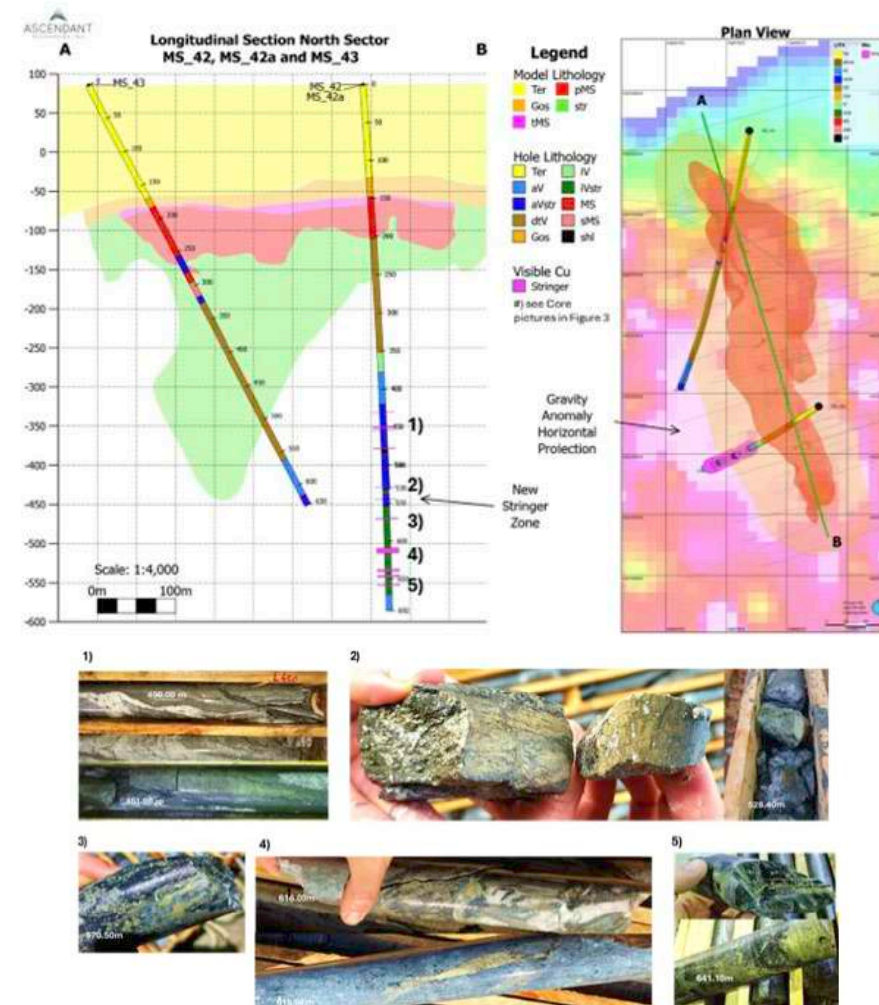
Current Drilling Intercepted a New Stringer Zone at Depth

New High Resolution Gravity Survey Target 1: SW North Zone Target

- Bulge in the gravity anomaly located to the west of the southern half of the North Massive Sulphide ore body
- High density mass source of the SW bulge sits deeper than the known ore deposits
- Center of the SW bulge coincides with the projection of notable volume that has identical chargeability and resistivity features of known massive sulphides
- Deeper source to the west can be explained geologically by a faulted displaced block of the known ore body or by a new Lense occurring in the western limb of the north zone anticline



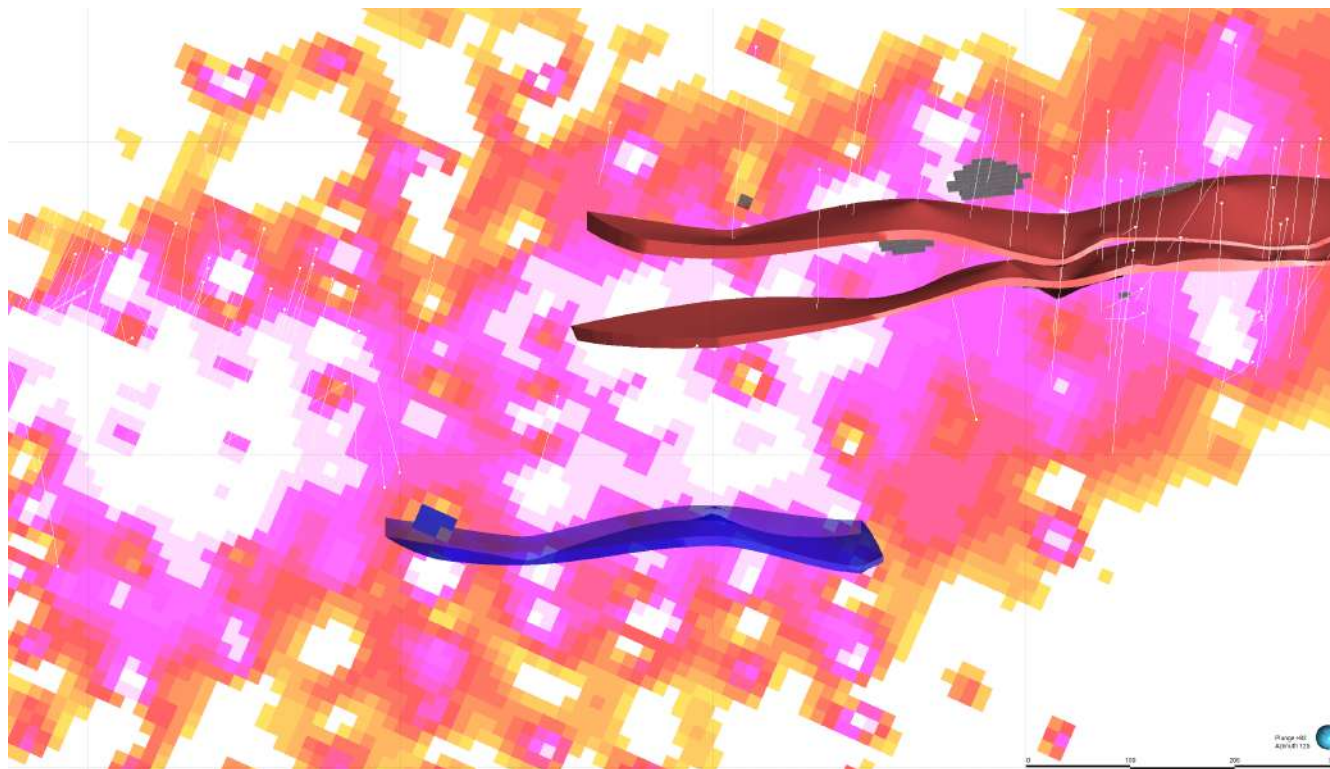
Downward (-60 m) Continuity Bouguer gravity map



LAGOA SALGADA VMS PROJECT

Gravity Survey Results Identify High Impact Near Deposit Massive Sulphide Exploration Targets

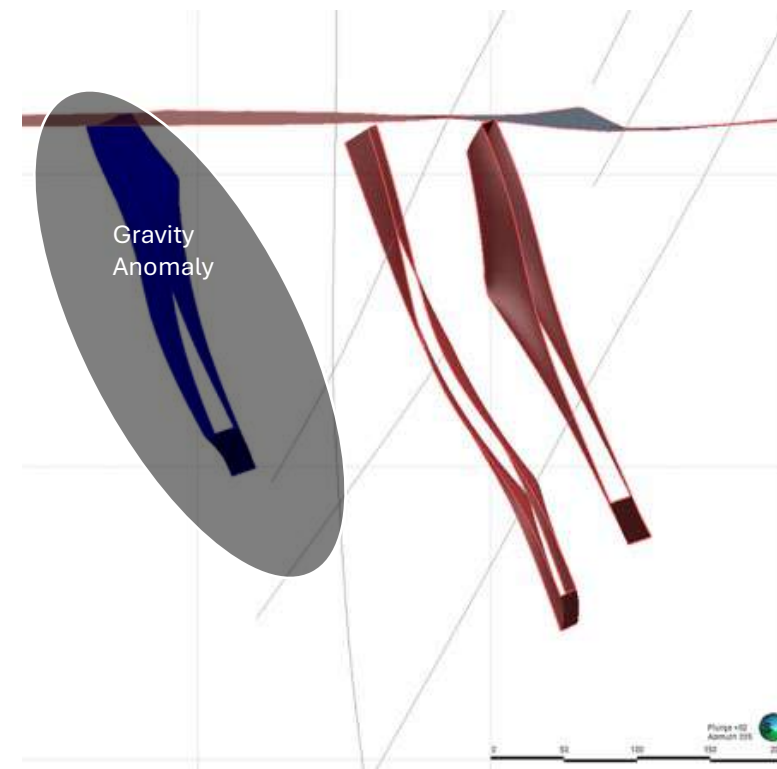
New High Resolution Gravity Survey Target 2 & 3: South Sector West & East Flanks



Down dip 3D View of the South Zone

The gravity anomaly is flanked by two discrete trends:

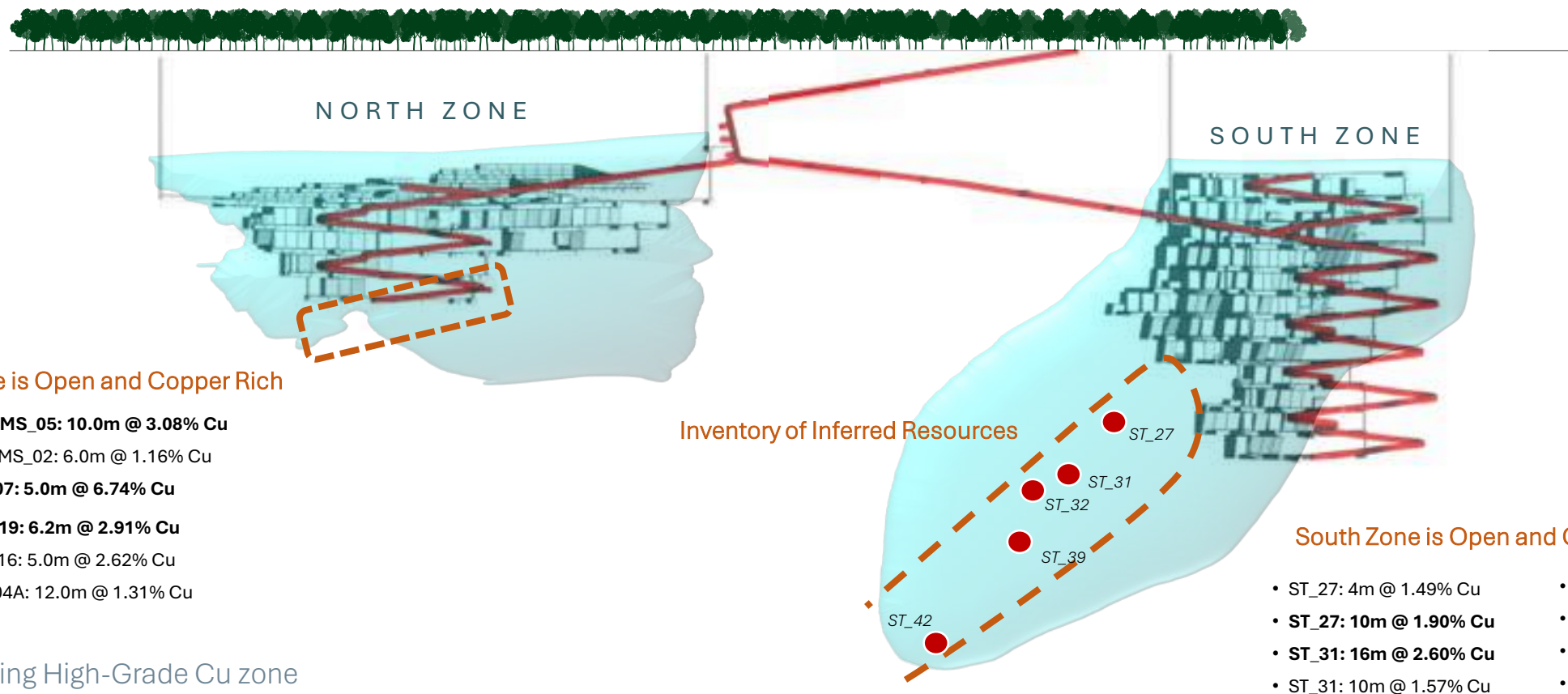
- East Flank is partially explained by two known semi massive Lense
- West Flank is untested and could represent a new massive sulphide lens in the footwall of the south Zone trend



- Inferred West Flank Geometry
- Known Semi massive Lenses South Zone

LAGOA SALGADA VMS PROJECT

Copper Potential largely untouched





MONT SORCIER IRON ORE PROJECT, QUEBEC

Longer Term Optionality for High Purity Iron in a
Top Tier Jurisdiction:

Positioned for the Green Steel Industry Transition



MONT SORCIER PROJECT – Optionality for the Long Term

Green Steel and Direct Reduction Iron (“DRI”)

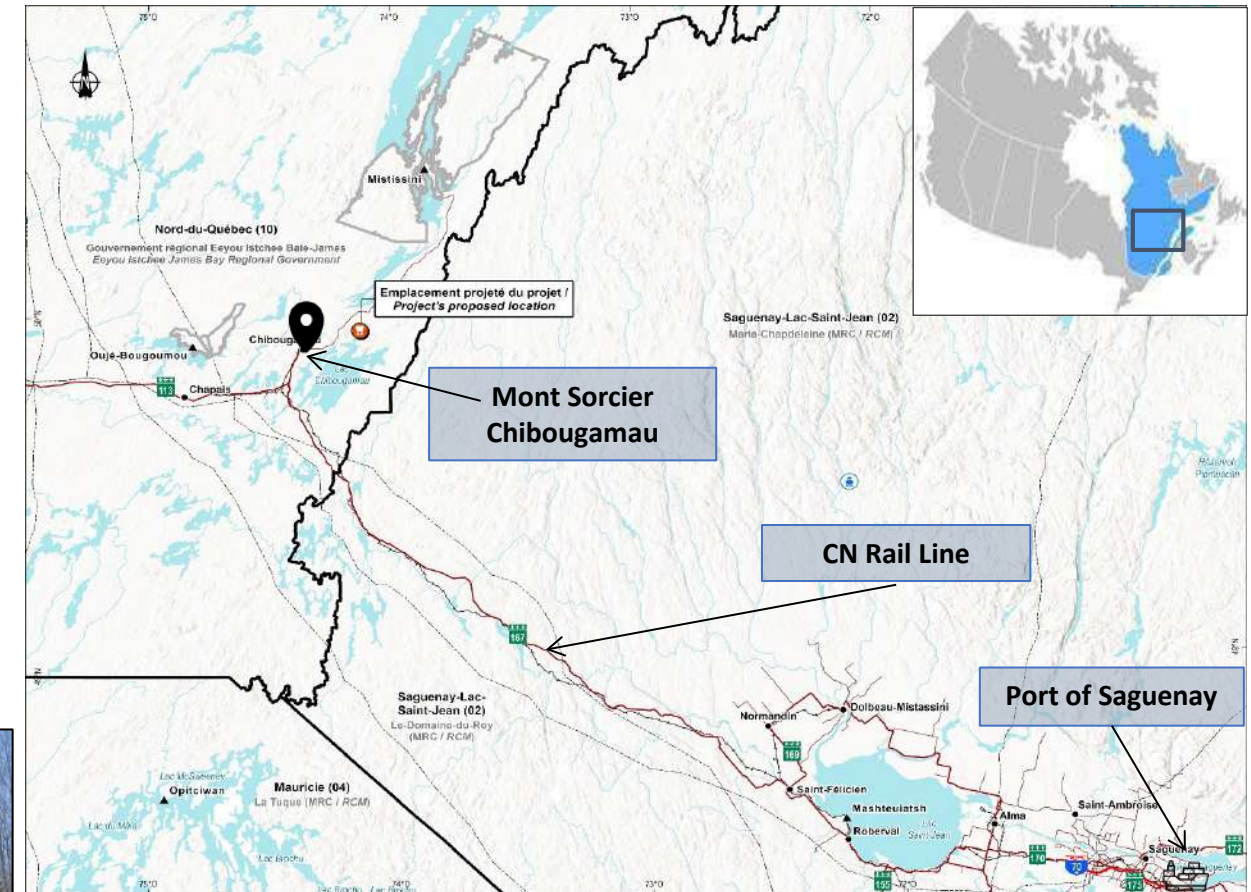
- Located 11km from Chibougamau, in Cree traditional territory, Quebec
- Site located only 25km from public rail head
- >300km of underutilized existing common carry rail line connected directly to ports
- Existing low-cost Hydro Power
- Two deep water ports - Saguenay and Quebec City - with available capacity
- Single province jurisdiction streamlines permitting
- Feasibility Study Ready to Commence



Port of Saguenay



Road to Site



Excellent Existing Infrastructure

Mont Sorcier



25km

CN Rail



370km

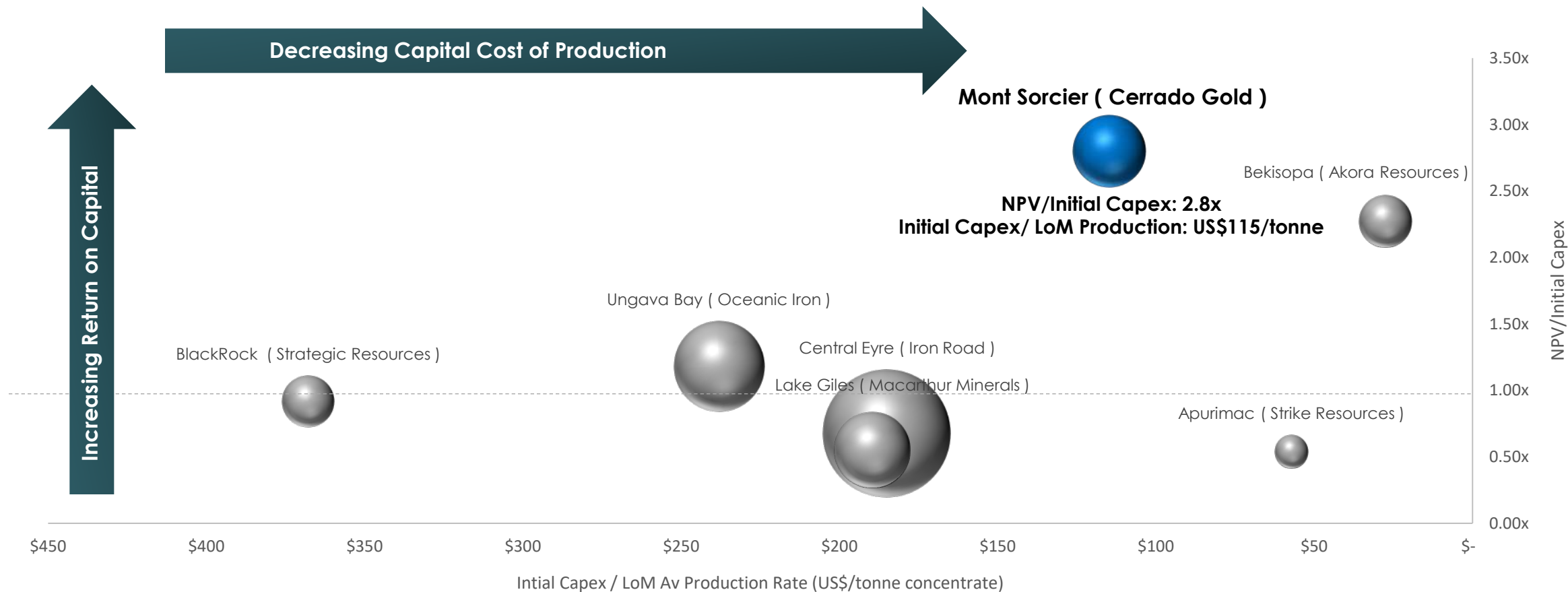
Port of Saguenay



MONT SORCIER PROJECT

Existing Infrastructure creates a capital efficiencies

▶ Mont Sorcier is one of the most Capital Efficient Projects Globally



MONT SORCIER PROJECT

Green Steel and Direct Reduction Iron

High Purity DRI Grade Iron For the Green Steel Revolution

67

% IRON
HIGH PURITY

High Purity Iron

Will benefit steel producers and the environment through lower EGE and coal use due to magnetite ore



Magnetic Separation

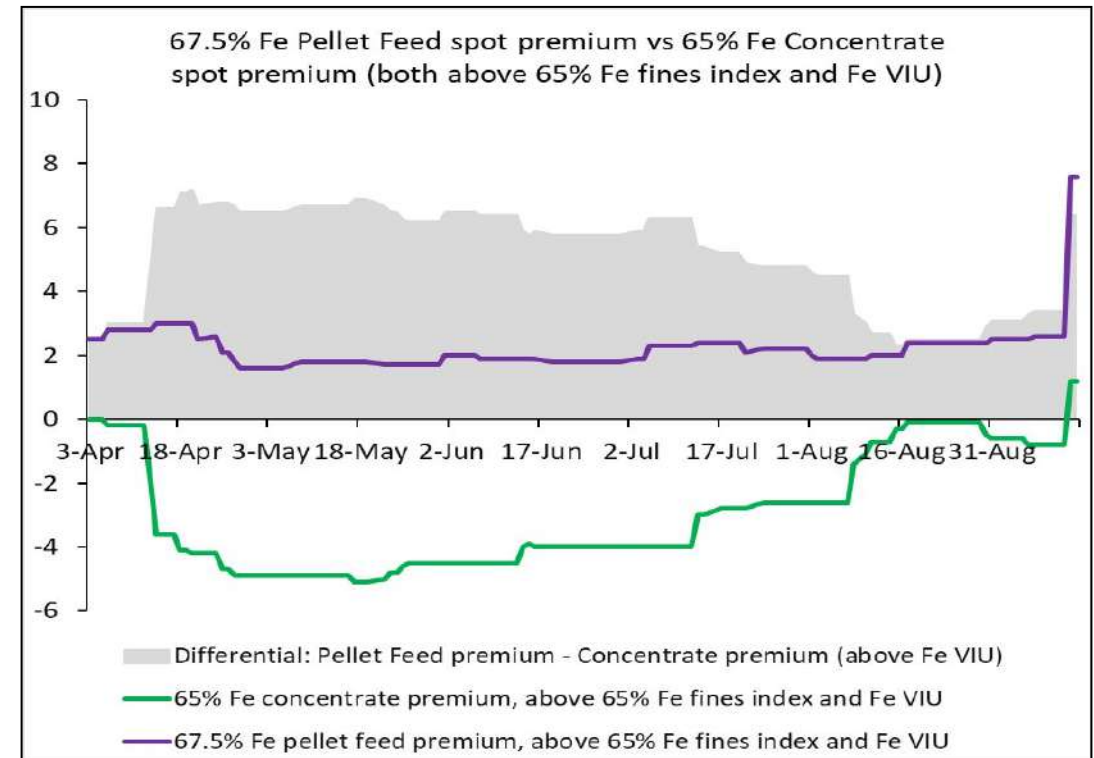
The deposit is magnetite allowing for Magnetic separation; an environmentally friendly method



Hydro Powered

85% of the power used to run the operation will be from renewable sources; mainly hydro power

- High Purity 67% Iron Concentrates significantly reduces green house gas emission in steel production
- Significant price premium expected for 67% DRI grade material vs 62% Index price
- High Grade material to displace lower grade material going forward as demand increases

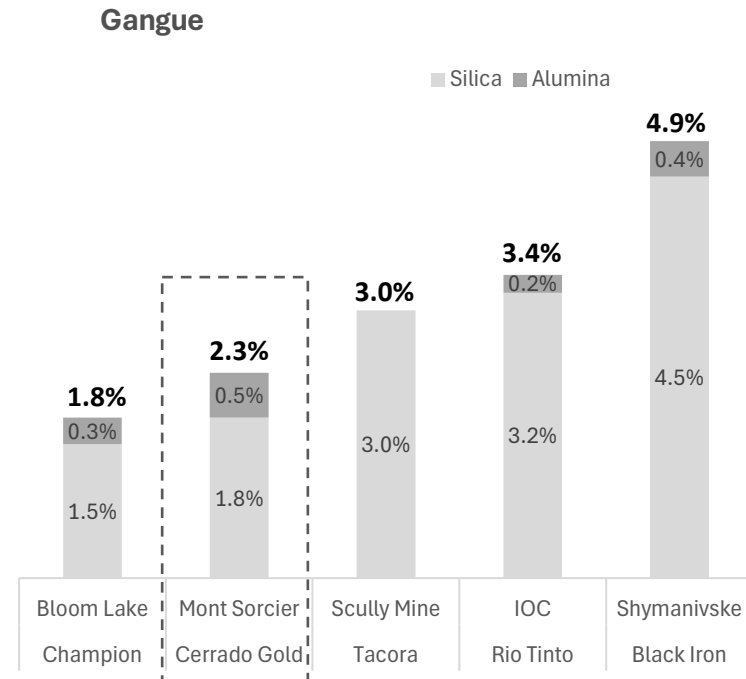
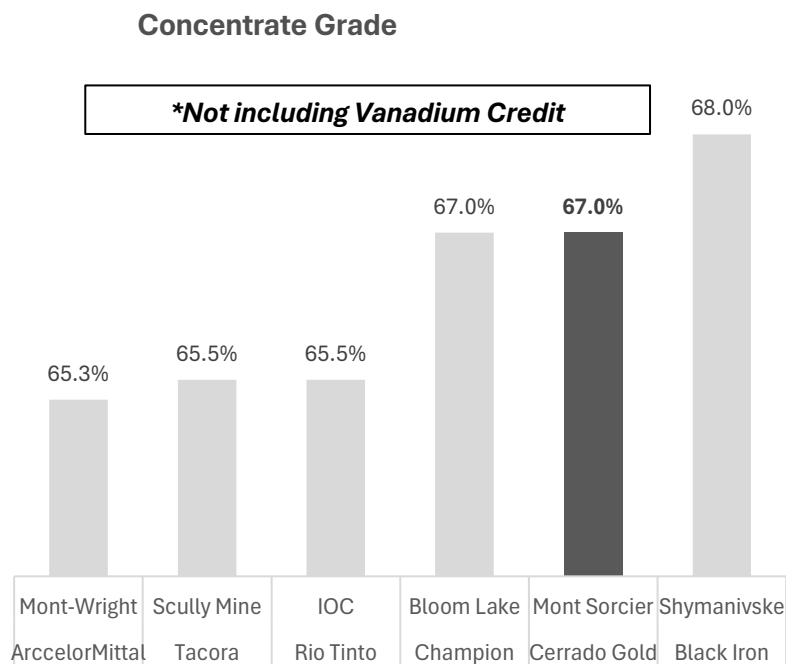


MONT SORCIER PROJECT

Premium Product

➤ **67% Concentrate Grade + Low Deleterious Metals = High Purity Product**

- High grade 67% Fe concentrate with <2.5% Silica and Alumina Combined
- Concentrate suitable for DRI and blast furnace-steel Production
- High grade material offers significant price premium and environmental benefits via reduced green house gas emission the steel making process



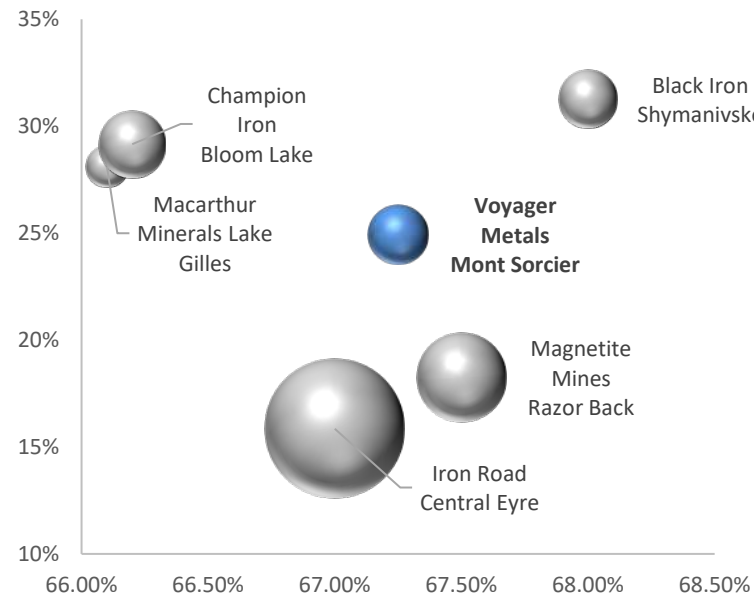
MONT SORCIER PROJECT

Well Defined Resources with Upside to Mine Life and/or Production Rate

Updated Metallurgy Confirms Ability to Produce 67% Fe Concentrate with Sub 2.5% Silica & Alumina

- Significant Indicated Resource in place to Backstop Feasibility Study
- Significant Additional Resources to support Future Expansion potential

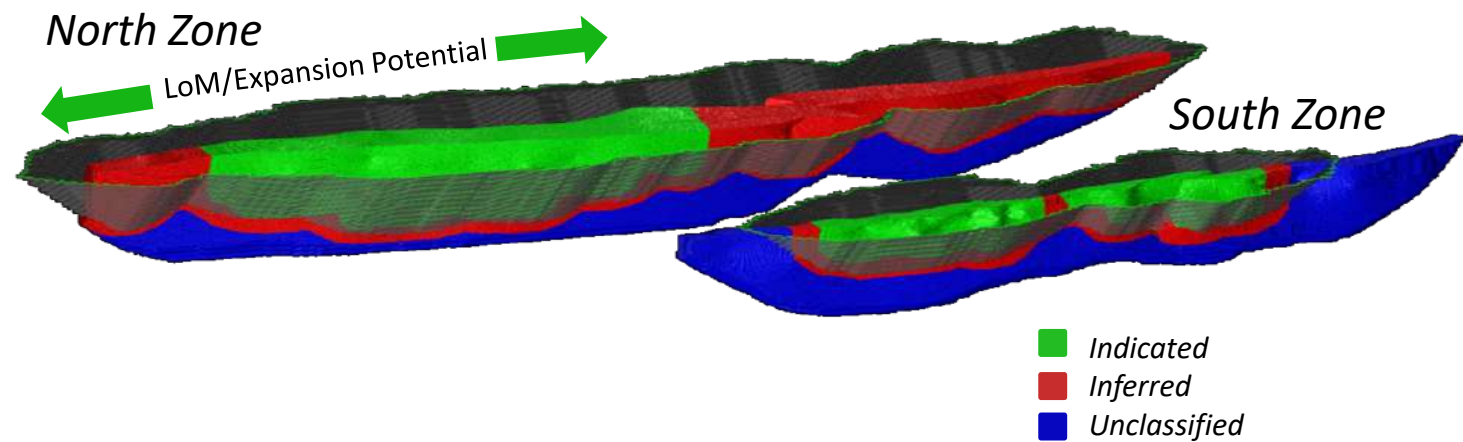
Resource and Grade⁽¹⁾



Resources

| Zone | Category | Tonnage | | | | Head grade | | | | | | | | | | Conc. |
|-------|-----------|-----------|------------|----------|------------|------------|--------|-----------|------------|-----------------------------------|----------------------|---------|----------------------|--------|--------|-------|
| | | Rock (Mt) | Fe Rec (%) | Wrec (%) | Conc. (Mt) | Fe2O3 (%) | Fe (%) | Fe3O4 (%) | Fe mag (%) | V ₂ O ₅ (%) | TiO ₂ (%) | MgO (%) | SiO ₂ (%) | %S (%) | Fe (%) | |
| North | Indicated | 559.3 | 72.1 | 29.2 | 163.4 | 37.70 | 26.35 | 28.20 | 19.72 | 0.21 | 1.10 | 19.8 | 25.1 | 1.12 | 65 | |
| | Inferred | 470.5 | 73.0 | 27.4 | 128.9 | 34.90 | 24.40 | 26.41 | 18.47 | 0.18 | 1.32 | 19.8 | 27.9 | 0.49 | 65 | |
| South | Indicated | 119.2 | 82.0 | 26.9 | 32.0 | 30.43 | 21.27 | 25.64 | 17.93 | 0.17 | 1.49 | 24.1 | 24.4 | | 65 | |
| | Inferred | 76.2 | 81.4 | 25.2 | 19.2 | 28.83 | 20.15 | 24.11 | 16.86 | 0.13 | 1.46 | 22.4 | 23.1 | | 65 | |
| Total | Indicated | 678.5 | 73.5 | 28.8 | 195.4 | 36.4 | 25.5 | 27.8 | 19.4 | 0.20 | 1.17 | 20.5 | 25.0 | | 65 | |
| | Inferred | 546.6 | 74.0 | 27.1 | 148.1 | 34.1 | 23.8 | 26.1 | 18.2 | 0.17 | 1.34 | 20.2 | 27.3 | | 65 | |

Please see appendix for full resource table with notes



MINERAL RESOURCES NOTES

Mont Sorcier Project

- The independent and qualified persons for the Mineral Resource Estimate, as defined by NI 43-101, are Marina Iund, P.Geo., Carl Pelletier, P.Geo., Simon Boudreau, P.Eng. all from InnovExplo Inc. and Mathieu Girard P.Eng. from Soutex. The effective date is June 6th, 2022
- These mineral resources are not mineral reserves, as they do not have demonstrated economic viability. The Mineral Resource Estimate follows current CIM Definition Standards.
- The results are presented undiluted and are considered to have reasonable prospects for eventual economic extraction by having constraining volumes applied to any blocks using Whittle software and by the application of cut-off grades for potential open-pit extraction method.
- The estimate encompasses two (2) deposits (North and South), subdivided into 8 individual zones (7 for North, 1 for South).
- No high-grade capping was applied.
- The estimate was completed using sub-block models in GEOVIA Surpac 2021.
- Grade interpolation was performed with the ID2 method on 4 m composites for the North deposit and on 10 m composites for the South deposit.
- The density of the mineralized zones was interpolated with the ID2 method. When no density analysis was available, the density value was estimated using linear regression with Fe₂O₃ analysis. For the unmineralized material, a density value of 2.8 g/cm³ (anorthosite and volcanics), 3.5 g/cm³ (Massive sulfide formation) and 2.00 g/cm³ (overburden) was assigned.
- The Mineral Resource Estimate is classified as Indicated and Inferred. The Inferred category is defined with a minimum of two (2) drill holes for areas where the drill spacing is less than 400 m, and reasonable geological and grade continuity have been shown. The Indicated category is defined with a minimum of three (3) drill holes within the areas where the drill spacing is less than 200 m, and reasonable geological and grade continuity have been shown. Clipping boundaries were used for classification based on those criteria.
- The Mineral Resource Estimate is locally pit-constrained for potential open-pit extraction method with a bedrock slope angle of 50° and an overburden slope angle of 30°. It is reported at a rounded cut-off grade of 2.30 % Weight Recovery. The cut-off grade was calculated for the concentrate using the following parameters: royalty = 3%; mining cost = CA\$3.30; mining overburden cost = CA\$2.45; processing cost = CA\$3.62; G&A = CA\$0.75; selling costs = CA\$58.36; Fe price = CA\$190/t; USD:CAD exchange rate = 1.3; and mill recovery = 100% (concentrate). The cut-off grades should be re-evaluated considering future prevailing market conditions (metal prices, exchange rates, mining costs etc.).
- The number of metric tonnes was rounded to the nearest thousand, following the recommendations in NI 43-101 and any discrepancies in the totals are due to rounding effects.
- The authors are not aware of any known environmental, permitting, legal, title-related, taxation, socio-political, or marketing issues, or any other relevant issue not reported in the Technical Report, that could materially affect the Mineral Resource Estimate.

MONT SORCIER PROJECT

Premium Product

| <i>PEA Summary (July 2022)</i> | | |
|---------------------------------------|---------------|----------------------------------|
| Production Summary | Unit | \$US Million LOM Total / Avg. |
| LOM Magnetite Payable | kt | 104,303 |
| Annual Production Rate | mtpa | 5.0 |
| Operating Costs | | |
| Total On-site Operating Costs | US\$/t | \$21.9 |
| Royalties | US\$/t | \$4.1 |
| Total Cash Costs | US\$/t | \$26.0 |
| Sustaining Capital | US\$/t | \$2.2 |
| All-in Sustaining Costs (AISC) | US\$/t | \$28.2 |
| Rail Transport (FOB Port) | US\$/dmt conc | \$18.0 |
| Ocean Freight to China (CFR China) | US\$/dmt conc | \$20.0 |
| CFR China US\$/t sold | | \$66.2 |
| Capital Costs | | |
| Initial Capital Costs | kUS\$ | \$456,000 |
| Contingency | kUS\$ | \$118,000 |
| Sustaining Capital Costs | kUS\$ | \$226,680 |
| Closure Costs | kUS\$ | \$50,400 |
| Financials | | |
| Post-Tax NPV (8%) | MUS\$ | \$1,607 |
| Post-Tax IRR | % | 43.0% |
| Post-Tax Payback | Years | 1.8 |
| Pricing | | |
| Iron Ore Price 62% | US\$/t | \$100 |
| Vanadium Price | US\$/t | \$15 |
| Premium Price 65%* | US\$/t | \$20 |

PAYBACK UNDER 2 YEARS

- ✓ Annual average EBITDA of US\$348MM
- ✓ Average annual free cash flow of US\$235MM
 - 21-year life of mine
- ✓ Significant expansion potential:
 - ✓ Mine plan includes only 45.6% of the total resource
- ✓ Initial Capex estimated at US\$574 million including US\$118 million contingency
- ✓ Total operating costs of US\$66/t of concentrate over LOM (freight to China included)
- ✓ Robust economics generate significant tax base for all levels of government
- ✓ **PEA Does Not factor in DRI Grade product Premium now anticipated**
- ✓ **UK Export Credit Agency and TD Bank have been Mandated as Lead Arranged for Non- Resource Project Financing for up to 70% of Upfront Capital Requirements**

MONT SORCIER PROJECT

Upcoming Milestones

- *Updated metallurgical testing results expected Q1 2025*
- *Feasibility Study expected in Q1 2026 building upon an existing strong PEA*
- *UK Export Credit Agency and TD Bank have been Mandated as Lead Arranged for Non- Resource Project Financing for up to 70% of Upfront Capital Requirements*



INVESTMENT HIGHLIGHTS – Proforma Company

Building Shareholder Value by Driving Substantial Cash Flow



Steady State Gold Producer

- **Gold Production of ~55Koz over next four years** based on recent PEA with exploration and expansion potential. Expect cash flow of ~\$50M/year and free cash flow of ~\$25M/year @ \$2100 Au¹

Developing Substantially Undervalued & Well Advanced Assets

- **MDN:** Expansion potential at Minera Don Nicolas, Argentina from underexplored extensive land package
- **Lagoa Salgada:** Defining the next low-cost VMS deposit with district scale discovery and exploration potential on Iberian Pyrite Belt, Portugal
- **Mont Sorcier:** Offers long-term value with feasibility study underway to support annual production of 5Mtpa 67% iron concentrate² suitable for the direct reduction iron and the green steel transition located in Quebec, Canada

Well-Funded

- **\$20M cash balance**, supplemented by cash flow from production and **additional asset sale proceeds (~\$25M)**
- **Fully funded to construction decisions** with strong support for construction funding

1. NI 43-101 PEA Technical Reports Published Minera Don Nicolas (Sept 19, 2024);

2. NI 43-101 PEA Technical Reports Published Mont Sorcier (July 2, 2022)

Appendix



CERRADO GOLD

Leadership - Management

**Mark Brennan, Chief Executive Officer, Chairman & Founder**

Mark Brennan is Cerrado Gold's CEO and Co-Chairman. He is a Founding Partner and Executive Chairman of Ascendant Resources Inc. and Executive Chairman of Vanadium One Iron Corp., and has more than 30 years of financial and operating experience in the Americas and Europe. Mr. Brennan most recently served as president and CEO of Sierra Metals Inc., a major zinc-lead-silver-copper mining company with operations in Peru and Mexico. Prior to that, he was the president and CEO of Largo Resources Ltd., and a founder of several resource companies, including Desert Sun Mining, Brasoil Corp., James Bay Resources, Morumbi Oil and Gas, and Admiral Bay Resources.

**Cliff Hale-Sanders, MBA, CFA, President**

Mr. Hale-Sanders is one of the founding partners in the formation of Ascendant Resources Inc. Prior to this Mr. Hale Sanders' had a career that spanned over 20 years in the capital markets industry working as a leading Base Metals and Bulk Commodities research analyst in Canada working at RBC Capital Markets, TD Securities, CIBC World Markets and Cormark Securities. During this period, Mr. Hale Sanders visited and reviewed numerous mining operations and corporate entities around the world. Mr. Hale-Sanders holds a B.Sc. in Geology and Chemistry, an MBA from McMaster University and is a CFA Charterholder.

**Jason Brooks, CPA, Chief Financial Officer**

Mr. Brooks is a Chartered Professional Accountant with over 18 years of experience in finance and accounting at international mining companies. Prior to joining Cerrado Gold, he was Vice President, Finance of Caldas Gold until it was acquired by Aris Gold. Prior to his time at Caldas, Mr. Brooks served in progressively senior roles at several international mining companies including Golden Star Resources, New Gold and Barrick Gold.

**Casper Groenewald, Chief Operating Officer**

Mr. Groenewald is a qualified metallurgist and has over 20 years of mineral processing experience in Africa and the Americas. He was the Senior Vice-President of DRA America and former Technical Director for Largo Resources where he led the commissioning and optimization of its Vanadium processing facility in Brazil. He is the former Operations director at Minopex, where he managed the operation of five diamond mines, and has also worked for Vantech (Xstrata's Vanadium division), Highveld Steel and Vanadium Corporation.

CERRADO GOLD

Leadership - Management



Andrew Croal, P.Eng., Chief Technical Officer

Mr. Croal is a Mining Engineer with 40 years of global mining experience in gold and base metal commodities. He is a versatile and practical mining professional with a proven track record of providing fit for purpose, workable solutions. His competence ranges to all aspects of mine planning, control, reporting and evaluation and combines technical expertise with safe operating requirements for all facets of the mining cycle. He has experience in Canada, South America, Africa, Australia and Papua New Guinea, having held senior roles in both Senior and Junior mining firms. He was a key member of several mine-building teams, most notably Rosebel (Iamgold), Detour Gold and Buzwagi (Barrick Gold). Andrew is a Professional Engineer in Ontario and has a BSc Mining Engineering from Queen's and an MBA from the University of Toronto.



Veronica Nohara, CEO, Minera Don Nicolas

Mrs. Veronica Nohara is an international business professional with more than 20 years experience in executive positions across various industries. Prior to joining Cerrado Veronica was Chief Executive Officer for Minera Don Nicolas and was instrumental in the successful start-up and operation of the gold facility. Veronica has a long history managing and directing businesses in different industries in Argentina, Uruguay, Brazil, Chile, Paraguay and Japan. Veronica has served on different chambers such as ABC (Argentine Beef Consortium), AFARTE, CAEM and is Honorary Director of Women in Mining. She is currently the President of the Chamber of Mining for the Province of Santa Cruz. Veronica holds a Bachelors Degree in international trade from Universidad Argentina de la Empresa, a Postgraduate in International Business and a Master of Business Administration from University Torcuato Di Tella.



Joao Barros, CEO, Ascendant Resources

Mr. Barros has over 18 years of mining experience including green fields and near mine exploration, environmental impact studies for open pit and underground mine operations as well as mine development and operations. Mr. Barros was responsible for licensing the underground gold mine operation from exploration to development, for Minaport-Minas de Portugal, Lda, and the planning and execution of the exploration and licensing for Blackheath Resources (TSX: BHR), Borralha EML tungsten project. Mr. Barros is the President of Redcorp – Empreendimentos Mineiros, Lda., and has been with that company since 2008, responsible for managing, coordinating and executing the exploration works in the Lagoa Salgada VMS Project. Mr. Barros is also a Member of the Portuguese Engineers Association.



Ed Guimaraes, Executive Vice President

Mr. Guimaraes has over 30 years of experience in the mining industry, most recently in an executive advisory capacity and through several board directorships. His career spans a broad range of base and precious metals producers, having supported the development, expansion, and ongoing operations of copper, zinc, lead, gold, and silver mines in Canada, Chile, Peru, Mexico and Argentina. Mr. Guimaraes previously was the Chief Financial Officer at Sierra Metals between 2014 and 2023, and he was with Aur Resources between 1995 and 2007, ultimately serving as Executive Vice-President, Finance and Chief Financial Officer, until its acquisition by Teck Resources. Prior to 1995, he worked in the Toronto mining group of PricewaterhouseCoopers. Mr. Guimaraes is a Chartered Professional Accountant (CPA, CA), a graduate of the ICD-Rotman Directors Education Program (ICD.D) and holds a Bachelor of Arts in Administrative and Commercial Studies from Western University.

CERRADO GOLD

Leadership - Management

**Carl Calandra, LL.B., MBA, Vice President, General Counsel & Corporate Secretary**

Mr. Calandra is a legal executive with more than 15 years of advisory, deal-making and public company experience. Prior to joining Cerrado, Mr. Calandra was Vice President and General Counsel of Dundee Corporation, a Canadian investment company focused on mining, and was an associate at a top-tier Canadian national law firm. Carl holds a Bachelor of Laws from the University of Western Ontario and a Master of Business Administration from the Ivey Business School. Carl has been a member of the Law Society of Ontario since 2006.

**David Ball, Vice President, Business Development**

Mr. Ball was most recently Chief Financial Officer of Santiago Metals Limitada, a private Chilean based copper producer and portfolio company of US Private Equity group, Denham Capital. Prior to his current role he held several positions at Macquarie Capital, an Australian Investment Bank During his career in the metals and mining sector, Mr. Ball has been actively involved in M&A, corporate advisory and fund raising of both equity and debt Mr. Ball brings mining focused operational and capital markets experience from Australia, Southeast Asia and North South America Mr. Ball holds a Bachelor of Commerce with Distinction (Curtin University) and a Masters of Finance (INSEAD).

**Mike McAllister, CPIR, Vice President, Investor Relations**

Mike McAllister has over 20 years of experience working with public mining companies, the last 14 as a mining specialized investor relations professional. He most recently was with Superior Gold and prior to that Sierra Metals where he helped the company complete the dual US listing progress and helped see the company progress from a small to a mid-tier diversified producer. Mr. McAllister also has worked at Avion Gold Corp., which was acquired by Endeavour Mining. Before working in investor relations roles, he worked at BMO Capital Markets in the Metals & Mining Group. Mike holds the Certified Professional Investor Relations (CPIR) designation completed at the Ivey School of Business, University of Western Ontario.

CERRADO GOLD

Leadership – Board of Directors



Mark Brennan, Chief Executive Officer, Chairman & Founder

Mark Brennan is Cerrado Gold's CEO and Co-Chairman. He is a Founding Partner and Executive Chairman of Ascendant Resources Inc. and Executive Chairman of Vanadium One Iron Corp., and has more than 30 years of financial and operating experience in the Americas and Europe. Mr. Brennan most recently served as president and CEO of Sierra Metals Inc., a major zinc-lead-silver-copper mining company with operations in Peru and Mexico. Prior to that, he was the president and CEO of Largo Resources Ltd., and a founder of several resource companies, including Desert Sun Mining, Brasoil Corp., James Bay Resources, Morumbi Oil and Gas, and Admiral Bay Resources.



Elmer Prata Salomão, Director

Elmer Prata Salomão served as General Director of Brazil's National Department of Mineral Production (DNPM), the federal agency in charge of administration of mineral concessions and the implementation of Brazilian mining policy, from 1990 to 1995. Mr. Salomão is founder and now managing director of well recognized GEOS-Mining Services, originally incorporated in 1974, and is now managing director of EPS Consulting, a solely owned mining consulting company. Mr. Salamao was a Director of Verna Minerals Corporate (currently Belo Sun Mining) working with Jad Salomao and Oscar Neto, as part of the team credited with the discovery and definition of Belo Sun's the Volta Grande Project, a deposit with over 7.0MM ounces of gold.



Jad Salomão, Founder & Director

Mr. Salomão has 42 years of experience in mineral exploration & mining and project evaluation with both major and Junior company in Brazil and Canada. He has managed several base metals projects (in special massive sulphides and sedimentary copper), precious metals (gold, PGM), diamonds, Industrial minerals (Ilmenite) and gem (Emerald, Alexandrite) projects. He is presently a major shareholder of the company Monte Sinai Mineração Ltda., which holds the Serra Alta project. Together with his partner, Oscar Neto, Mr. Salomão founded Verena Mineração Ltda - which became a junior mining company listed in the Toronto Stock Market in Canada from 1996 through 2010 – Verena Minerals Corporation (VMC) – which is now known as Belo Sun Mining Corp. Mr. Salomão and Mr. Oscar Neto are credited with the discovery and definition of the Belo Sun Volta Grande deposit; a deposit with over 7 million ounces of gold.



Robert Campbell, M.Sc., P. GEO., Director

Mr. Campbell is an exploration geologist with over 40 years experience in mining and exploration industry through Canada, United States and Latin America. He most recently served as Vice President, Exploration for Ascendant Resources and Cerrado Gold Inc. Prior to this, Robert held the position of Vice President, Exploration for Largo Resources, a company he was involved with since its inception in 2003. Mr. Campbell has also worked with a number of major mining companies, most notably Noranda and Lac Minerals, and has held other senior management positions such as Vice President of Exploration for Apogee Minerals Ltd. Mr. Campbell holds a M.Sc. in geology from the Department of Earth Sciences, University of Western Ontario.



Kurt Menchen, Director

Mr. Menchen is the past President and Country Manager for Brazil at Cerrado Gold and prior to that the President of Operations, Brazil, of Largo Resources Ltd, and has over 45 years of experience operating and managing mining projects, including over 20 years as General Manager at the Jacobina Gold project in Bahia State, Brazil. His prior experience also includes Anglo American's Vaal Reefs underground gold mine in South Africa and De Beers Diamonds in Angola. Mr. Menchen holds a degree in mining engineering from the Federal University of Rio Grande do Sul, Brazil.

CERRADO GOLD

Leadership – Board of Directors



Robert Sellars, Director

Mr. Sellars has 40 years experience in capital markets and financial services and has significant experience on investment industry committees within the IIROC. Mr. Sellars previously sat on the board of directors of Android Industries, United Hydrocarbons International and Mutual Fund Dealers Association of Canada and currently serves on the board of directors for Dundee Sustainable Technologies. Mr. Sellars holds the position of Chief Financial Officer at Red Cloud Financial Services Inc. Previously, Mr. Sellars served as Chief Financial Officer & Executive Vice President for Dundee Corp., Chief Financial Officer at Dundee Energy Ltd., Chief Financial Officer & Director at CMP 2017 Resource LP, Chief Financial Officer & Director at CMP 2019 Resource LP, Chief Financial Officer & Director at CMP 2021 Resource LP, Chairman for Dundee 360 Real Estate Corp., President of Dundee Securities, Inc., Chief Financial Officer & Chief Operating Officer at Dundee Securities Ltd., Chief Financial Officer & Executive Vice President at Dundee Insurance Agency Ltd. and Chief Financial Officer of Dundee Global Investment Management, Inc.



Christopher Jones, CA, CFA, Director

Mr. Jones is an experienced professional chartered accountant, business valuator, Chief Financial Officer and financial advisor. His significant experience, keen strategic insight and ability to form partnerships with his clients lead to the ultimate goal of increasing their net worth while achieving significant corporate growth. His diverse experience enables him to offer unique solutions for maximum success and profitability. Chris is a Chartered Professional Accountant (CPA), Chartered Accountant (CA), Licensed Public Accountant (LPA), Chartered Financial Analyst (CFA) and Chartered Business Valuator (CBV). As the youngest Partner at Williams & Partners, he advises on complex taxation strategies, growth strategies, cash flow management, financing strategies, wealth management, and succession planning. Chris advises several private equity firms on acquisition targets and appropriate due diligence requirements highlighting key risk areas and maximizing target potential while serving as an advisor to high-net worth clients and families. Chris has served as CFO to several mid-market companies. He is the CFO of both AGTA Home Health Care and Bloom Care Solutions. He currently acts as Audit Committee Chair for Lara Exploration Ltd.



Maria Virginia Anzola, Director

Ms. Anzola has over 20 years of experience advising companies in the extraction industry. Ms. Anzola previously held the role of General Counsel and Corporate Secretary for Ascendant Resources and Cerrado gold where she provided leadership and direction on all legal matters. In 2017, Ms. Anzola served as Assistant General Counsel for Primero Mining Corp, and prior to that she served as Senior Counsel for Hudbay Minerals Inc. In addition, Ms. Anzola served as Consultant to the Tax Group of Borden Ladner Gervais LLP for over two years. Prior to moving to Canada, Ms. Anzola spent 11 years in private practice in her home country of Venezuela, mostly advising international companies engaged in the oil and gas business. Ms. Anzola has been called to the BAR in Ontario and Venezuela and has an LL.M from the University of Michigan, Ann Arbor and from Osgoode Hall Law School



Rui Santos, Director

Mr. Santos is a lawyer based in Portugal who is widely regarded as a leading authority in the mining sector in Portugal. Mr. Santos has spent over 20 years representing/assisting domestic and international corporations in negotiations and disputes with the State regarding land acquisitions, exploration, extraction and environmental licenses, for both the mining and oil and gas industries in Portugal, Angola, Brazil and East Timor. Most notably, he was the legal advisor for major privatization transaction regarding the acquisition of Somincor by EuroZinc, which is now Lundin Mining's Portuguese subsidiary operating the large-scale Neves-Corvo mine in Portugal. Mr. Santos is a Partner of CRA - Coelho Ribeiro e Associados – Portuguese Law Firm, where he leads the firm's Arbitration and Mining practices. Mr. Santos is a member of the Portuguese Bar Association, the Brazilian Bar Association, the Lawyers' Association of the Republic of Timor-Leste and the Lawyers' Association of Macau. Mr. Santos is also a recognized author on arbitration and dispute resolution.

PEER COMPARISON

As at 20 Feb 2025

| | |
|---------|---------|
| CADUSD | 0.704 |
| AUDUSD | 0.639 |
| GBPUSD | 1.2638 |
| EUROUSD | 1.05023 |

Junior Producers (Sth America)

| Company Name | Principal Asset Name | Location | Development Stage | Enterprise Value | Analyst Consensus NAV | Analyst Consensus Cash Flow 2025E | EV/NAV | EV/CF 2025 |
|---------------|----------------------|-----------|-------------------|------------------|--------------------------|---|--------|------------|
| | | | | | | | | |
| | | | | US\$m | US\$m | US\$m | x | x |
| Jaguar Mining | MTL Complex | Brazil | Production | \$123 | \$233 | \$75 | 0.53x | 1.64x |
| Aris Mining | Segovia | Colombia | Production | \$970 | \$2,377 | \$309 | 0.41x | 3.14x |
| Minera Alamos | Santana | Mexico | Production | \$113 | \$310 | \$13 | 0.37x | 8.88x |
| Orla Mining | Camino Rojo | Mexico | Production | \$2,179 | \$1,929 | \$166 | 1.13x | 13.13x |
| McEwen Mining | San Jose | Argentina | Production | \$420 | \$760 | \$25 | 0.55x | 16.59x |
| Gold Resource | Don David | Mexico | Production | \$38 | \$142 | na | 0.27x | |
| Mako Mining | San Albino | Nicaragua | Production | \$232 | na | na | | |
| Average | | | | | | | 0.54x | 8.68x |

Junior Base Metals Developers

| Company Name | Principal Asset Name | Location | Development Stage | Enterprise Value | Analyst Consensus NAV | Analyst Consensus Cash Flow 2025E | EV/NAV | EV/CF 2025 |
|-------------------------|----------------------|----------|-------------------|------------------|--------------------------|---|--------|------------|
| | | | | | | | | |
| | | | | US\$m | US\$m | US\$m | x | x |
| Arizona Metals | Kay | USA | Resource | \$95 | \$675 | na | 0.14x | |
| Arizona Sonoran | Cactus | USA | PEA | \$173 | \$690 | na | 0.25x | |
| NorthIsle Copper & Gold | North Island | Canada | PEA | \$95 | \$345 | na | 0.28x | |
| Faraday Copper | Copper Creek | USA | PEA | \$100 | \$344 | na | 0.29x | |
| Osisko Metals | Pine Point | Canada | PEA | \$58 | \$131 | na | 0.44x | |
| Fireweed Metals | Macpass | Canada | PEA | \$194 | \$417 | na | 0.47x | |
| Marimaca | Marimaca | Chile | PEA | \$369 | \$649 | na | 0.57x | |
| Northwest Copper | Kwanika-Stardust | Canada | PEA | \$36 | na | na | | |
| Emerita Resources | IBW | Spain | Resource | \$285 | na | na | | |
| Average - Pre BFS | | | | | | | 0.35x | |
| Cordoba Minerals | Alacran | Colombia | BFS | \$12 | na | na | | |
| Gunnison Copper | Johnson | USA | Construction | \$48 | \$317 | | 0.15x | |
| Highland Copper | Copperwood | USA | BFS | \$25 | \$141 | na | 0.18x | |
| Ivanhoe Electric | Santa Cruz | USA | PFS | \$782 | \$1,928 | na | 0.41x | |
| Trilogy Metals | Arctic | Canada | BFS | \$133 | \$283 | na | 0.47x | |
| Foran Mining | Mclivenna Bay | Canada | BFS | \$971 | \$1,334 | na | 0.73x | |
| Firefly Metals | Ming | Canada | PFS | \$308 | \$422 | na | 0.73x | |
| Denarius Metals | Lomero Poyatos | Spain | BFS | \$90 | na | na | | |
| Sandfire Americas | BlackButte | USA | FS | \$165 | na | na | | |
| Average - Post BFS | | | | | | | 0.44x | |

| Sources | |
|--|-----------------------------------|
| Financial | Technical & Forecasts |
| 3Q 2024 Financials | CIBC Consensus estimates Jan 2025 |
| 3Q 2024 Financials (adjusted for Jan 21 Fundraising) | CIBC Consensus estimates Jan 2025 |
| 3Q 2024 Financials | CIBC Consensus estimates Jan 2025 |
| 3Q 2024 Financials | CIBC Consensus estimates Jan 2025 |
| 3Q 2024 Financials | CIBC Consensus estimates Jan 2025 |
| 3Q 2024 Financials | CIBC Consensus estimates Jan 2025 |
| 3Q 2024 Financials | CIBC Consensus estimates Jan 2025 |

| Sources | |
|--------------------|-----------------------------------|
| Financial | Technical & Forecasts |
| 3Q 2024 Financials | CIBC Consensus estimates Jan 2025 |
| 3Q 2024 Financials | CIBC Consensus estimates Jan 2025 |
| 3Q 2024 Financials | |
| 3Q 2024 Financials | CIBC Consensus estimates Jan 2025 |
| 3Q 2024 Financials | CIBC Consensus estimates Jan 2025 |
| 3Q 2024 Financials | CIBC Consensus estimates Jan 2025 |
| 3Q 2024 Financials | CIBC Consensus estimates Jan 2025 |
| 3Q 2024 Financials | CIBC Consensus estimates Jan 2025 |

| | |
|--------------------|-----------------------------------|
| 3Q 2024 Financials | CIBC Consensus estimates Jan 2025 |
| 3Q 2024 Financials | CIBC Consensus estimates Jan 2025 |
| 3Q 2024 Financials | CIBC Consensus estimates Jan 2025 |
| 3Q 2024 Financials | CIBC Consensus estimates Jan 2025 |
| 3Q 2024 Financials | CIBC Consensus estimates Jan 2025 |
| 3Q 2024 Financials | CIBC Consensus estimates Jan 2025 |
| 3Q 2024 Financials | CIBC Consensus estimates Jan 2025 |
| 3Q 2024 Financials | CIBC Consensus estimates Jan 2025 |
| 3Q 2024 Financials | CIBC Consensus estimates Jan 2025 |

PEER COMPARISON

Junior Base Metals Producers

| Company Name | Principal Asset Name | Location | Development Stage | Enterprise Value | Analyst Consensus NAV | Analyst Consensus Cash Flow 2025E | EV/NAV | EV/CF 2025 |
|---------------------|----------------------|----------------------|-------------------|------------------|-----------------------|-----------------------------------|--------------|--------------|
| | | | | | | | | |
| | | | | US\$mm | US\$mm | US\$mm | x | x |
| Titan Mining | Empire State | USA | Production | \$26 | \$55 | \$19 | 0.47x | 1.35x |
| Central Asia Metals | Kounrad | Kazakhstan | Production | \$302 | \$578 | \$99 | 0.52x | 3.05x |
| Adriatic Metals | Vares | Bosnia & Herzegovina | Production | \$1,000 | \$1,172 | \$272 | 0.85x | 3.67x |
| Atalaya Mining | Rio Tinto | Spain | Production | \$640 | \$989 | \$138 | 0.65x | 4.65x |
| Nexa Resources | Cerro Lindo | Peru | Production | \$1,935 | \$1,117 | \$324 | 1.73x | 5.97x |
| Average | | | | | | | 0.85x | 3.74x |

| Sources | |
|--------------------|-----------------------------------|
| Financial | Technical & Forecasts |
| 4Q 2024 Financials | CIBC Consensus estimates Jan 2025 |
| 3Q 2024 Financials | CIBC Consensus estimates Jan 2025 |
| 2H 2024 Financials | CIBC Consensus estimates Jan 2025 |
| 2024 Financials | CIBC Consensus estimates Jan 2025 |
| 3Q 2024 Financials | CIBC Consensus estimates Jan 2025 |
| 3Q 2024 Financials | CIBC Consensus estimates Jan 2025 |
| 3Q 2024 Financials | CIBC Consensus estimates Jan 2025 |

Magnetite Developers

| Company Name | Principal Asset Name | Location | Development Stage | Enterprise Value | Project NAV | Initial Capex | LoM Av. Production | MI&I Resources | EV/NAV | NAV/Initial Capex | Initial Capex/LoM Av. Production | Sources |
|--------------------|---------------------------|------------|-------------------|------------------|-------------|---------------|--------------------|-----------------------------------|--------------|-------------------|----------------------------------|-----------------------------|
| | | | | | | | | | | | | |
| | | | | US\$mm | US\$mm | US\$mm | x | Mt Fe ₂ O ₃ | x | x | US\$/tonne | |
| Strike Resources | Apurimac | Peru | PFS | \$1 | 616.0 | 1,144.0 | 8.8 | 10,506 | 0.00x | 0.54x | \$130 | 4Q 2024 Financials |
| Iron Road | Central Eyre Iron Project | Australia | BFS | \$24 | 1,680.0 | 1,740.0 | 12.0 | 1,032 | 0.01x | 0.97x | \$145 | 2H 2024 Financials |
| Macarthur Minerals | Lake Giles | Australia | BFS | \$5 | 315.0 | 569.0 | 3.0 | 54 | 0.02x | 0.55x | \$190 | 2024 Financials |
| Oceanic Iron | Ungava Bay | Canada | PEA | \$23 | 1,405.0 | 1,190.0 | 5.0 | 741 | 0.02x | 1.18x | \$238 | 1Q 2025 Financials |
| Black Iron | Shymanivske | Ukraine | PEA | \$37 | 1,400.0 | 452.0 | 4.0 | 261 | 0.03x | 3.10x | \$113 | Cleansing Notice 9 Feb 2025 |
| Akora Resources | Bekisopa | Madagascar | PFS | \$11 | 125.0 | 55.0 | 2.0 | 89 | 0.08x | 2.27x | \$28 | 3Q 2024 Financials |
| Average | | | | | | | | | 0.03x | 1.43x | \$141 | |

1. Strike adjusted for 44% project interest

Magnetite Producers

| Company Name | Principal Asset Name | Location | Development Stage | Enterprise Value | Analyst Consensus NAV | Analyst Consensus Cash Flow 2025E | EV/NAV | EV/CF 2025 |
|---------------|----------------------|----------|-------------------|------------------|-----------------------|-----------------------------------|--------|------------|
| | | | | | | | | |
| | | | | US\$mm | US\$mm | US\$mm | x | x |
| Champion Iron | Bloom Lake | Canada | Production | \$2,572 | 2,767.6 | 350.9 | 0.93x | 7.33x |

| Sources | |
|--------------------|-----------------------------------|
| Financial | Technical & Forecasts |
| 3Q 2024 Financials | CIBC Consensus estimates Jan 2025 |